

ARCHITECTURAL HERITAGE

GARDEN | MODERN BRITISH | INTERIOR



ARCHITECTURAL HERITAGE

GARDEN | MODERN BRITISH | INTERIOR

Welcome to our 2021 Handmade Garden Collections Catalogue.

We enter this new year with optimism and hope after the recent announcement of an effective vaccine for Covid-19. With the year that has passed associated forever with lockdowns and life-changing events, it has been our garden that has offered sanctuary, a respite from the outside world; be it growing vegetables, tending plants (weeding!) or simply a place to be, to rest and recuperate... many of us have rediscovered or simply had more time to enjoy the spaces, large and small, outside our back door.

In this time I have been considering how to best describe to you all that we do here at Architectural Heritage. It then came to me that we have not one garden range, defined by type (i.e. planters, fountains etc), moreover a series of 'collections', defined by material. To this end, our 2021 catalogue I hope now better illustrates the depth and scope of our offering, through our six 'Handmade Garden Collections'.

One of our collections included here for the first time is our new *Forged Iron Garden Dining & Furniture Collection*. Taking inspiration from the 19th century French originals, these elegant designs have been forged with a long life outdoors in mind; hand finished with a protective coating of zinc allowing us to guarantee against rust even in the most challenging of conditions. The furniture is then primed and painted to our standard white or to the colour of your choice.

In addition, we have developed a number of new designs for our *Verdigris Copper Garden Planter Collection*; an alternative patination option in our *Artificial Stone Collection*, and some exciting new products within our new *Curated Garden Collection*.

To complement our handmade collections, I have in this catalogue sought to explain other aspects of what we do here at Architectural Heritage. Please then see at the back of the catalogue information on *Garden Antiques*, *Modern British Art*, *Architectural Interiors* and our *Consultancy* service, for valuations and assistance with conservation and restoration.

I very much hope you enjoy our 2021 catalogue and wish, as always, to thank you for your kind interest.

With best regards
Alex Puddy



ARCHITECTURAL HERITAGE

THE HANDMADE GARDEN COLLECTIONS



The Forged Iron Garden Dining & Furniture Collection



The Age-Patinated Artificial Stone Garden Fountain & Ornament Collection



The Verdigris Copper Garden Planter Collection



The Carved Natural Stone Garden Ornament Collection



The Lead Garden Ornament & Planter Collection



The Curated Garden Collection





**THE FORGED
IRON GARDEN
DINING &
FURNITURE
COLLECTION**



The Circular Garden Table for Two with Two Ladderback Garden Chairs

Inspired by the 19th century French originals, this distinctive garden dining and furniture collection is forged with a long life outdoors in mind. Each piece is handcrafted and finished with a protective coating of zinc, enabling us to guarantee against rust even in the most challenging of conditions. The furniture is then painted to our standard white or, alternatively, to the colour of your choice.

Seat height 81 cm [2' 8"]

Seat width 45 cm [1' 5¾"]

Seat depth 50 cm [1' 7¾"]

Table height 74 cm [2' 5"]

Table diameter 62 cm [2' ½"]



The Circular Garden Table for Two with Two Low Ladderback Carver Chairs

Inspired by the 19th century French originals, this distinctive garden dining and furniture collection is forged with a long life outdoors in mind. Each piece is handcrafted and finished with a protective coating of zinc, enabling us to guarantee against rust even in the most challenging of conditions. The furniture is then painted to our standard white or, alternatively, to the colour of your choice.

Seat height 83 cm [2' 8¾"]

Seat width 64 cm [2' 1¼"]

Seat depth 70 cm [2' 3½"]

Table height 74 cm [2' 5"]

Table diameter 62 cm [2' ½"]



The Circular Garden Table for Two with Two Sprung Garden Chairs

Inspired by the 19th century French originals, this distinctive garden dining and furniture collection is forged with a long life outdoors in mind. Each piece is handcrafted and finished with a protective coating of zinc, enabling us to guarantee against rust even in the most challenging of conditions. The furniture is then painted to our standard white or, alternatively, to the colour of your choice.

Seat height 93 cm [3' ½"]

Seat width 47 cm [1' 6½"]

Seat depth 46 cm [1' 6"]

Table height 74 cm [2' 5"]

Table diameter 62 cm [2' ½"]



The Circular Garden Table for Two with Two Sprung Carver Chairs

Inspired by the 19th century French originals, this distinctive garden dining and furniture collection is forged with a long life outdoors in mind. Each piece is handcrafted and finished with a protective coating of zinc, enabling us to guarantee against rust even in the most challenging of conditions. The furniture is then painted to our standard white or, alternatively, to the colour of your choice.

Seat height 93 cm [3' ½"]

Seat width 50 cm [1' 7¾"]

Seat depth 58 cm [1' 10¾"]

Table height 74 cm [2' 5"]

Table diameter 62 cm [2' ½"]



**The Small Circular Garden Dining Table for Four
with Four Ladderback Garden Chairs**

Inspired by the 19th century French originals, this distinctive garden dining and furniture collection is forged with a long life outdoors in mind. Each piece is handcrafted and finished with a protective coating of zinc, enabling us to guarantee against rust even in the most challenging of conditions. The furniture is then painted to our standard white or, alternatively, to the colour of your choice.

Seat height 81 cm [2' 8"]

Seat width 45 cm [1' 5¾"]

Seat depth 50 cm [1' 7¾"]

Table height 74 cm [2' 5"]

Table diameter 110 cm [3' 7¼"]



**The Small Circular Garden Dining Table for Four
with Four Ladderback Carver Chairs**

Inspired by the 19th century French originals, this distinctive garden dining and furniture collection is forged with a long life outdoors in mind. Each piece is handcrafted and finished with a protective coating of zinc, enabling us to guarantee against rust even in the most challenging of conditions. The furniture is then painted to our standard white or, alternatively, to the colour of your choice.

Seat height 88cm [2' 10½"]

Seat width 64cm [2' 1¼"]

Seat depth 70cm [2' 3¼"]

Table height 74cm [2' 5"]

Table diameter 110cm [3' 7¼"]



The Small Circular Garden Dining Table for Six with Six Ladderback Garden Chairs

Inspired by the 19th century French originals, this distinctive garden dining and furniture collection is forged with a long life outdoors in mind. Each piece is handcrafted and finished with a protective coating of zinc, enabling us to guarantee against rust even in the most challenging of conditions. The furniture is then painted to our standard white or, alternatively, to the colour of your choice.

Seat height 81 cm [2' 8"]

Seat width 45 cm [1' 5¾"]

Seat depth 50 cm [1' 7¾"]

Table height 74 cm [2' 5"]

Table diameter 110 cm [3' 7¼"]



**The Circular Garden Table for Two with
Two Ladderback Garden Chairs**

***An example of furniture painted to the colour
of your choice***

Shown here, as an example of furniture painted to the colour of your choice, we have a set, zinc primed and painted in Olive from The Little Greene Paint Company. We can provide this service for an additional 10% of the sales price, which includes your chosen paint.



The Large Circular Garden Dining Table for Four with Four Ladderback Carver Chairs

Inspired by the 19th century French originals, this distinctive garden dining and furniture collection is forged with a long life outdoors in mind. Each piece is handcrafted and finished with a protective coating of zinc, enabling us to guarantee against rust even in the most challenging of conditions. The furniture is then painted to our standard white or, alternatively, to the colour of your choice.

Seat height 88 cm [2' 10½"]

Seat width 64 cm [2' 1¼"]

Seat depth 70 cm [2' 3¼"]

Table height 74 cm [2' 5"]

Table diameter 126 cm [4' 1½"]



The Large Circular Garden Dining Table for Six with Six Ladderback Chairs

Inspired by the 19th century French originals, this distinctive garden dining and furniture collection is forged with a long life outdoors in mind. Each piece is handcrafted and finished with a protective coating of zinc, enabling us to guarantee against rust even in the most challenging of conditions. The furniture is then painted to our standard white or, alternatively, to the colour of your choice.

Seat height 81 cm [2' 8"]

Seat width 45 cm [1' 5¾"]

Seat depth 50 cm [1' 7¾"]

Table height 74 cm [2' 5"]

Table diameter 126 cm [4' 1½"]



The Small Rectangular Garden Dining Table for Four with Four Ladderback Chairs

Inspired by the 19th century French originals, this distinctive garden dining and furniture collection is forged with a long life outdoors in mind. Each piece is handcrafted and finished with a protective coating of zinc, enabling us to guarantee against rust even in the most challenging of conditions. The furniture is then painted to our standard white or, alternatively, to the colour of your choice.

- Seat height 81 cm [2'8"]
- Seat width 45 cm [1'5¾"]
- Seat depth 50 cm [1'7¾"]
- Table height 74 cm [2'5"]
- Table width 161 cm [5'3½"]
- Table depth 92 cm [3'¼"]





The Small Rectangular Garden Dining Table for Six with Six Ladderback Chairs

Inspired by the 19th century French originals, this distinctive garden dining and furniture collection is forged with a long life outdoors in mind. Each piece is handcrafted and finished with a protective coating of zinc, enabling us to guarantee against rust even in the most challenging of conditions. The furniture is then painted to our standard white or, alternatively, to the colour of your choice.

Seat height 81 cm [2' 8"]

Seat width 45 cm [1' 5¾"]

Seat depth 50 cm [1' 7¾"]

Table height 74 cm [2' 5"]

Table width 161 cm [5' 3½"]

Table depth 92 cm [3' ¼"]



The Small Rectangular Garden Dining Table for Six with Four Ladderback Chairs and Two Ladderback Carver Chairs

Inspired by the 19th century French originals, this distinctive garden dining and furniture collection is forged with a long life outdoors in mind. Each piece is handcrafted and finished with a protective coating of zinc, enabling us to guarantee against rust even in the most challenging of conditions. The furniture is then painted to our standard white or, alternatively, to the colour of your choice.

Seat height 81 cm [2' 8"]

Seat width 45 cm [1' 5¾"]

Seat depth 50 cm [1' 7¾"]

Carver height 88 cm [2' 10½"]

Carver width 64 cm [2' 1¼"]

Carver depth 70 cm [2' 3¼"]

Table height 74 cm [2' 5"]

Table width 161 cm [5' 3½"]

Table depth 92 cm [3' ¼"]



The Large Rectangular Garden Dining Table for Eight with Eight Ladderback Chairs

Inspired by the 19th century French originals, this distinctive garden dining and furniture collection is forged with a long life outdoors in mind. Each piece is handcrafted and finished with a protective coating of zinc, enabling us to guarantee against rust even in the most challenging of conditions. The furniture is then painted to our standard white or, alternatively, to the colour of your choice.

Seat height 81 cm [2' 8"]

Seat width 45 cm [1' 5¾"]

Seat depth 50 cm [1' 7¾"]

Table height 74 cm [2' 5"]

Table width 252 cm [8' 3¼"]

Table depth 92 cm [3' ¼"]



The Large Rectangular Garden Dining Table for Eight with Six Ladderback Chairs and Two Ladderback Carver Chairs

Inspired by the 19th century French originals, this distinctive garden dining and furniture collection is forged with a long life outdoors in mind. Each piece is handcrafted and finished with a protective coating of zinc, enabling us to guarantee against rust even in the most challenging of conditions. The furniture is then painted to our standard white or, alternatively, to the colour of your choice.

Seat height 81 cm [2' 8"]
Seat width 45 cm [1' 5¾"]
Seat depth 50 cm [1' 7¾"]

Carver height 88 cm [2' 10½"]
Carver width 64 cm [2' 1¼"]
Carver depth 70 cm [2' 3¼"]

Table height 74 cm [2' 5"]
Table width 252 cm [8' 3¼"]
Table depth 92 cm [3' ¼"]



The Large Rectangular Garden Dining Table for Ten with Ten Ladderback Chairs

Inspired by the 19th century French originals, this distinctive garden dining and furniture collection is forged with a long life outdoors in mind. Each piece is handcrafted and finished with a protective coating of zinc, enabling us to guarantee against rust even in the most challenging of conditions. The furniture is then painted to our standard white or, alternatively, to the colour of your choice.

Seat height 81 cm [2' 8"]

Seat width 45 cm [1' 5¾"]

Seat depth 50 cm [1' 7¾"]

Table height 74 cm [2' 5"]

Table width 252 cm [8' 3¼"]

Table depth 92 cm [3' ¼"]



The Large Rectangular Garden Dining Table for Ten with Eight Ladderback Chairs and Two Ladderback Carver Chairs

Inspired by the 19th century French originals, this distinctive garden dining and furniture collection is forged with a long life outdoors in mind. Each piece is handcrafted and finished with a protective coating of zinc, enabling us to guarantee against rust even in the most challenging of conditions. The furniture is then painted to our standard white or, alternatively, to the colour of your choice.

Seat height 81 cm [2' 8"]

Seat width 45 cm [1' 5¾"]

Seat depth 50 cm [1' 7¾"]

Carver height 88 cm [2' 10½"]

Carver width 64 cm [2' 1¼"]

Carver depth 70 cm [2' 3¼"]

Table height 74 cm [2' 5"]

Table width 252 cm [8' 3¼"]

Table depth 92 cm [3' ¼"]



The Rectangular Garden Coffee Table with Two Low Ladderback Carvers and a Small Straight Ladderback Garden Seat

Inspired by the 19th century French originals, this distinctive garden dining and furniture collection is forged with a long life outdoors in mind. Each piece is handcrafted and finished with a protective coating of zinc, enabling us to guarantee against rust even in the most challenging of conditions. The furniture is then painted to our standard white or, alternatively, to the colour of your choice.

Seat height 83 cm [2' 8¾"]
Seat width 121 cm [3' 11½"]
Seat depth 60 cm [1' 11½"]

Carver height 83 cm [2' 8¾"]
Carver width 64 cm [2' 1¼"]
Carver depth 70 cm [2' 3½"]

Table height 47 cm [1' 6½"]
Table width 122 cm [4']
Table depth 71 cm [2' 4"]



The Rectangular Garden Coffee Table with Two Low Ladderback Carvers and a Medium Straight Ladderback Garden Seat

Inspired by the 19th century French originals, this distinctive garden dining and furniture collection is forged with a long life outdoors in mind. Each piece is handcrafted and finished with a protective coating of zinc, enabling us to guarantee against rust even in the most challenging of conditions. The furniture is then painted to our standard white or, alternatively, to the colour of your choice.

Seat height 83 cm [2' 8¾"]
Seat width 148 cm [4' 10¼"]
Seat depth 60 cm [1' 11½"]

Carver height 83 cm [2' 8¾"]
Carver width 64 cm [2' 1¼"]
Carver depth 70 cm [2' 3½"]

Table height 47 cm [1' 6½"]
Table width 122 cm [4']
Table depth 71 cm [2' 4"]



The Small Straight Ladderback Garden Seat

Inspired by the 19th century French originals, this distinctive garden dining and furniture collection is forged with a long life outdoors in mind. Each piece is handcrafted and finished with a protective coating of zinc, enabling us to guarantee against rust even in the most challenging of conditions. The furniture is then painted to our standard white or, alternatively, to the colour of your choice.

Height 83 cm [2' 8¾"]
Width 121 cm [3' 11½"]
Depth 60 cm [1' 11½"]



The Medium Straight Ladderback Garden Seat

Inspired by the 19th century French originals, this distinctive garden dining and furniture collection is forged with a long life outdoors in mind. Each piece is handcrafted and finished with a protective coating of zinc, enabling us to guarantee against rust even in the most challenging of conditions. The furniture is then painted to our standard white or, alternatively, to the colour of your choice.

Height 83 cm [2' 8¼"]
Width 148 cm [4' 10¼"]
Depth 60 cm [1' 11½"]



The Large Straight Ladderback Garden Seat

Inspired by the 19th century French originals, this distinctive garden dining and furniture collection is forged with a long life outdoors in mind. Each piece is handcrafted and finished with a protective coating of zinc, enabling us to guarantee against rust even in the most challenging of conditions. The furniture is then painted to our standard white or, alternatively, to the colour of your choice.

Height 83 cm [2' 8¾"]

Width 192 cm [6' 3½"]

Depth 60 cm [1' 11½"]



The Semi-Circular Ladderback Garden Seat

Inspired by the 19th century French originals, this distinctive garden dining and furniture collection is forged with a long life outdoors in mind. Each piece is handcrafted and finished with a protective coating of zinc, enabling us to guarantee against rust even in the most challenging of conditions. The furniture is then painted to our standard white or, alternatively, to the colour of your choice.

Height 85 cm [2' 9½"]

Width 208 cm [6' 10"]

Depth 90 cm [2' 11½"]



The Semi-Circular Ladderback Garden Tree Seat

Inspired by the 19th century French originals, this distinctive garden dining and furniture collection is forged with a long life outdoors in mind. Each piece is handcrafted and finished with a protective coating of zinc, enabling us to guarantee against rust even in the most challenging of conditions. The furniture is then painted to our standard white or, alternatively, to the colour of your choice.

Height 88cm [2' 10½"]

Width 190cm [6' 2¾"]

Depth 90cm [2' 11½"]





The Sprung Garden Chair

Height 93 cm [3' ½"]
Width 47 cm [1' 6½"]
Depth 46 cm [1' 6"]



The Sprung Carver Garden Chair

Height 93 cm [3' ½"]
Width 50 cm [1' 7¾"]
Depth 58 cm [1' 10¾"]

Inspired by the 19th century French originals, this distinctive garden dining and furniture collection is forged with a long life outdoors in mind. Each piece is handcrafted and finished with a protective coating of zinc, enabling us to guarantee against rust even in the most challenging of conditions. The furniture is then painted to our standard white or, alternatively, to the colour of your choice.



**The Ladderback
Garden Chair**

Height 81 cm [2' 8"]
Width 45 cm [1' 5¾"]
Depth 50 cm [1' 7¾"]



**The Ladderback
Carver Chair – High**

Height 88 cm [2' 10½"]
Width 64 cm [2' 1¼"]
Depth 70 cm [2' 3¼"]



**The Ladderback
Carver Chair – Low**

Height 83 cm [2' 8¾"]
Width 64 cm [2' 1¼"]
Depth 70 cm [2' 3½"]



The Circular Garden Table for Two

Height 74 cm [2' 5"]

Diameter 62 cm [2' 1/2"]

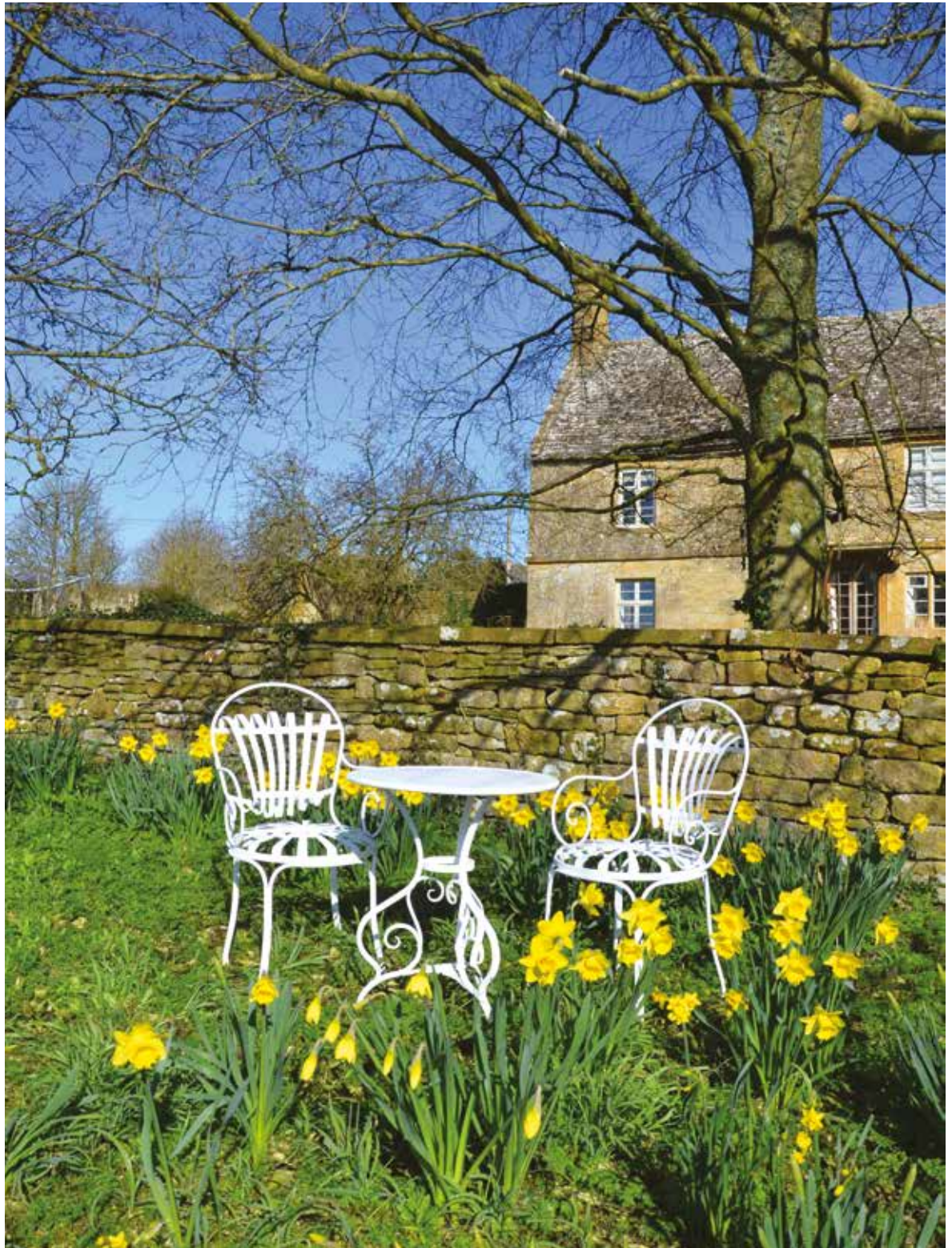


The Rectangular Garden Coffee Table

Height 47 cm [1' 6 1/2"]

Width 122 cm [4']

Depth 71 cm [2' 4"]





**The Small Circular
Garden Dining Table**

Height 74 cm [2' 5"]

Diameter 110 cm [3' 7¼"]



**The Large Circular
Garden Dining Table**

Height 74 cm [2' 5"]

Diameter 126 cm [4' 1½"]



The Small Rectangular Garden Dining Table

Height 74 cm [2' 5"]
Width 161 cm [5' 3½"]
Depth 92 cm [3' ¼"]



The Large Rectangular Garden Dining Table

Height 74 cm [2' 5"]
Width 252 cm [8' 3¼"]
Depth 92 cm [3' ¼"]





**THE AGE-
PATINATED
ARTIFICIAL
STONE GARDEN
FOUNTAIN &
ORNAMENT
COLLECTION**

Image courtesy of Nico Wille Photography/Miscelden Estate



**The Single Tier
Fountain**
**New Stone Colour
Patination**

A single tier fountain in artificial stone, with our new natural stone colour patination. The bowl having egg and dart moulding to the rim raised upon a pedestal with acanthus foliage on square base. Surmounted by a spout in the form of a pineapple. A pump pack is available.

Overall height
125 cm [4' 1"]
Overall diameter
80 cm [2' 7½"]
Square at base
45 cm [1' 6"]



Image courtesy of Nico Valls Photography/Miserden Estate

The Single Tier Fountain

A single tier fountain in age-patinated artificial stone, the bowl having egg and dart moulding to the rim raised upon a pedestal with acanthus foliage on square base. Surmounted by a spout in the form of a pineapple. A pump pack is available.

Overall height
125 cm [4' 1"]
Overall diameter
80 cm [2' 7½"]
Square at base
45 cm [1' 6"]



The Large Low Single Tier Fountain

A large, low, single tier fountain in age-patinated artificial stone, the bowl having egg and dart moulding to the rim, raised upon a circular foot and square base. Surmounted by a spout in the form of a pineapple. A pump pack is available.

Overall height
84cm [2'9"]

Overall diameter
135cm [4'5"]

Square at base
67cm [2'2"]

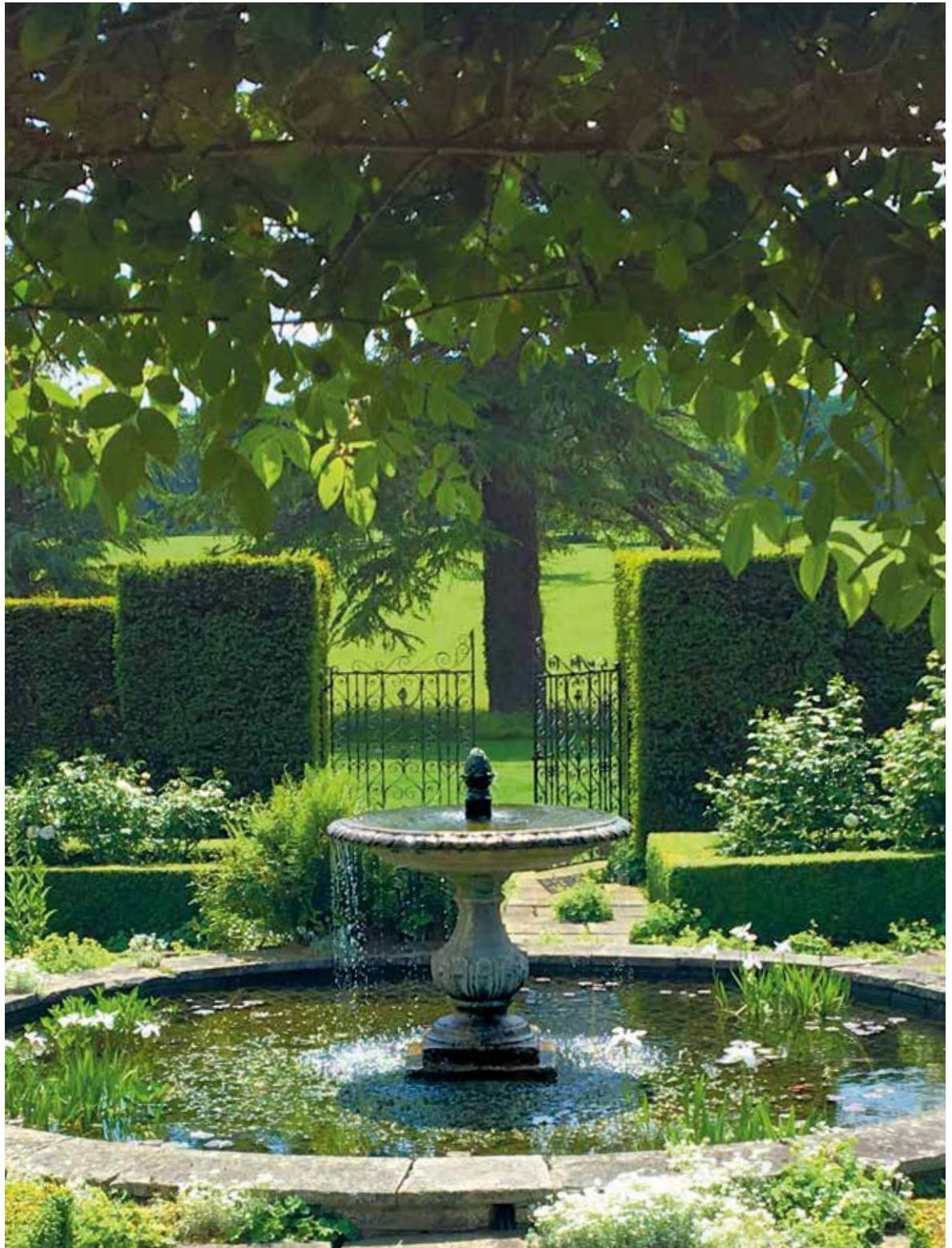
The Large Single Tier Fountain

A large single tier fountain in age-patinated artificial stone, the bowl having egg and dart moulding to the rim, raised upon a baluster pedestal carved with acanthus foliage, with circular foot and square base. Surmounted by a spout in the form of a pineapple. A pump pack is available.

Overall height
152.5cm [5']

Overall diameter
135cm [4'5"]

Square at base
67cm [2'2"]





Installation and photograph by Cotswold Estates and Gardens Ltd

The Two Tier Fountain

A two tier fountain in age-patinated artificial stone taken from an 18th century original, each bowl having egg and dart carving to the rim, raised upon baluster pedestals with carved foliage. The upper bowl is surmounted by a pineapple finial. A pump pack is available.

Overall height
262cm [8'7"]
Overall diameter
137cm [4'6"]
Square at base
67cm [2'2"]



Installation and photograph by Cotswold Estates and Gardens Ltd

The Decorative Circular Pool Surround

An age-patinated artificial stone circular pool surround having egg and dart decoration.

External diameter
426 cm [14']

Internal diameter
366 cm [12']

Height
22 cm [8½"]



**The Circular
Pool Surround**
**New Stone Colour
Patination**

An artificial stone circular pool surround with our new natural stone colour patination.

External diameter
320 cm [10' 6"]

Height
28 cm [11"]



**The Circular
Pool Surround**

An age-patinated artificial
stone circular pool
surround.

External diameter
320 cm [10' 6"]

Height
28 cm [11"]



The Square Pool Surround

This age-patinated artificial stone pool surround has many possibilities; squares, rectangles and rills. Illustration shows standard size.

Overall width 262cm [8'7"]

Height 28cm [11"]



The Great Westwood Pool Surround

A large and impressive
age-patinated artificial
stone pool surround at
6 metres diameter.

External diameter
600 cm [19' 8"]

Height
35 cm [1' 1¾"]

The Wall Fountain with Lion Mask

A wall fountain in age-patinated artificial stone, having arched back plate inset with a lead lion mask spout, raised above a 'D' shaped bowl with stepped rectangular base. A pump pack is available.

Height 151 cm [5']
Width 80 cm [2' 7"]
Depth 51 cm [1' 8"]

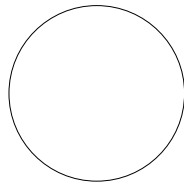






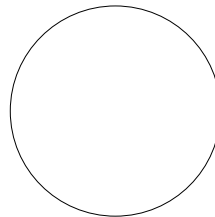
The Sphere

An age-patinated artificial stone sphere. Perfect for driveway edging or as finials.



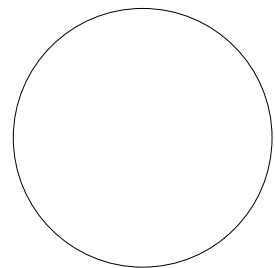
Small

Diameter 38cm [1' 3"]



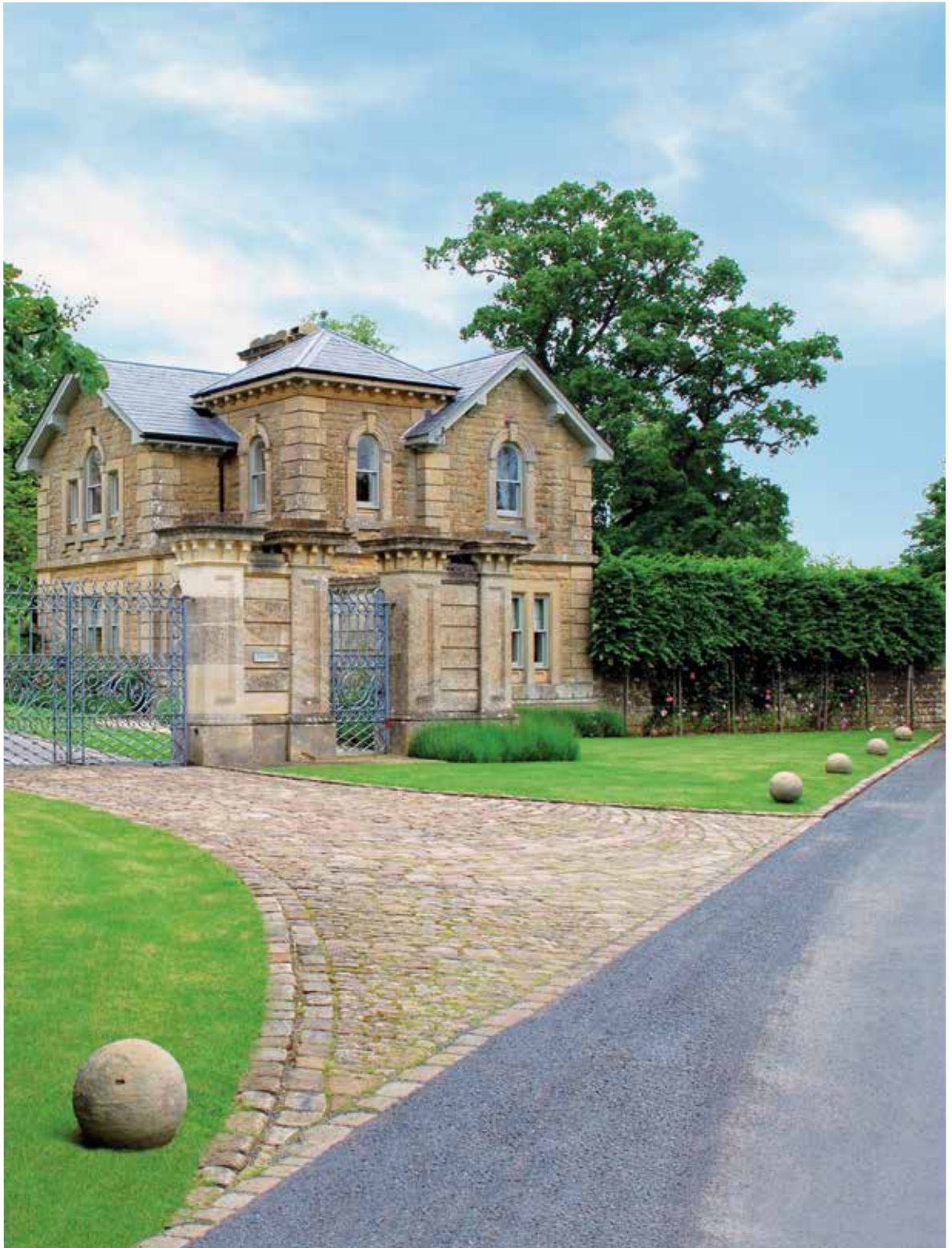
Medium

Diameter 45.5cm [1' 6"]



Large

Diameter 56cm [1' 10"]





The Heritage Finial

An age-patinated artificial stone lidded urn having circular socle and square base. The campana shaped body having lobed decoration to the bowl, the shaped lid surmounted by a finial.

Height 84 cm [2' 9½"]

Diameter 56 cm [1' 10"]

Square at base 30cm [1']

The Heritage Plinth

An age-patinated artificial stone Neo-classical plinth after the original by Austin and Seeley.

Height 91 cm [3']

Square at base 48cm [1' 7"]



**The William IV
Sundial Pedestal**

An age-patinated artificial stone sundial pedestal, available with choice of armillary sphere.

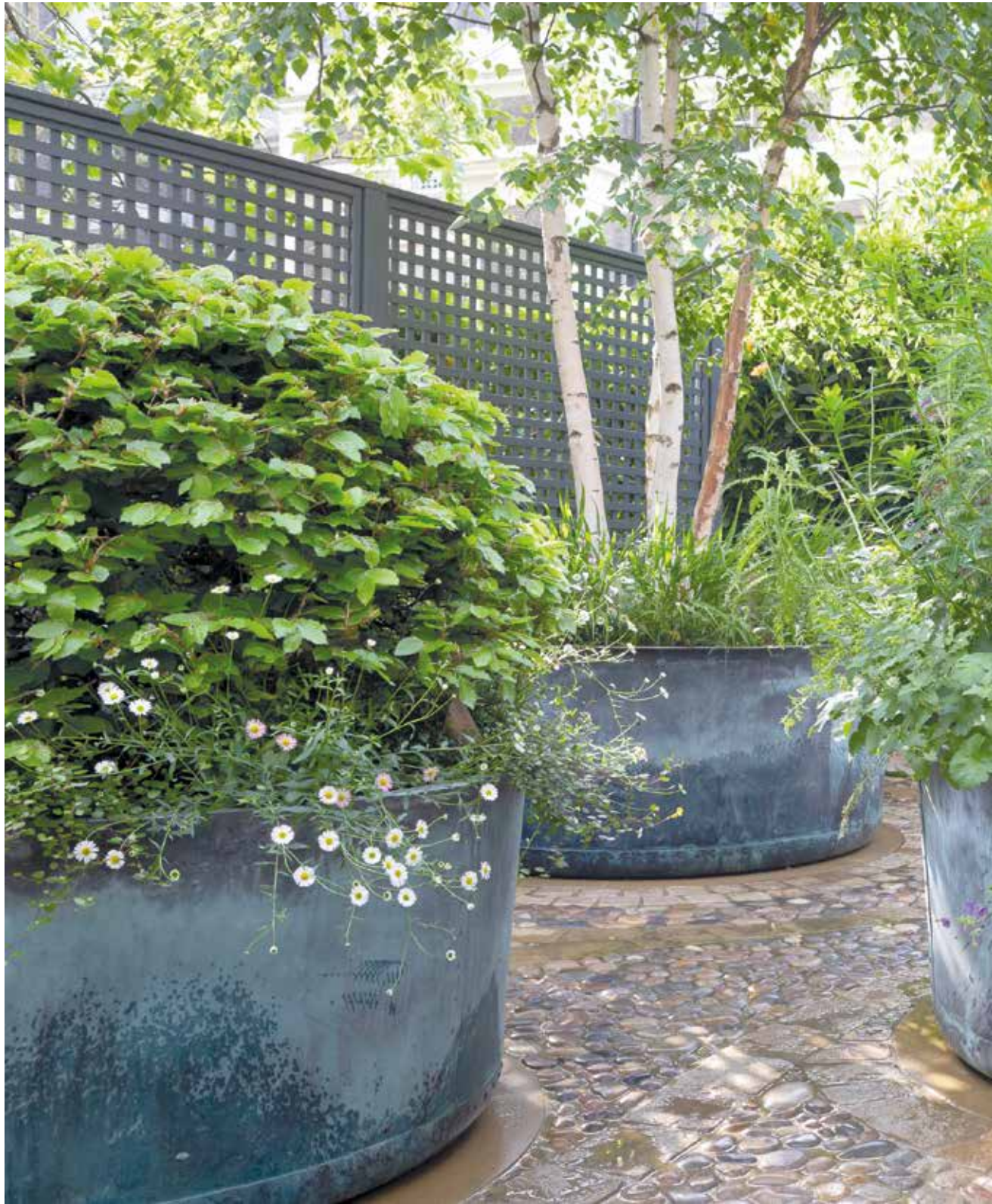
**Shown with Greenwich
Armillary Sphere**

Overall height
191 cm [6' 3¼"]
Square at base
68 cm [2' 2½"]
Sphere diameter
70 cm [2' 3½"]





Image courtesy of Butter Wakefield Garden Design





**THE VERDIGRIS
COPPER GARDEN
PLANTER
COLLECTION**

Photograph by Eleanor Walpole/Garden Design by Burter Wakefield



National Trust

The Sissinghurst Castle Garden Copper Planter

Sissinghurst Estate was a ruin when purchased by Vita Sackville-West and Harold Nicolson in 1930. After three years of clearing the long-overgrown land, the creation of 'a garden where none was' became a joint labour of love that would last for over three decades.

In general, Harold was responsible for the design and layout along strong architectural lines, while Vita (so named to differentiate her from her mother, also a Victoria) was the head of her team of gardeners, innovating with informal planting schemes to give visitors a



© The Cecil Beaton Studio Archive at Sotheby's



© National Trust Image/Andrew Butler

ARCHITECTURAL HERITAGE

GARDEN | MODERN BRITISH | INTERIOR



© National Trust Image/Arnhel de Serra

horticultural experience of discovery and exploration.

First opened to the public in 1937, the gardens 'drew on the sense of an abandoned past' with the old Tower at its ancient heart. Although the White Garden is the most well-known of Sissinghurst's ten garden rooms, the Cottage Garden by contrast has a sunset planting scheme of hot colours, warm reds and golds, which shout in a riot of colour in late summer and autumn. Here, in the centre of the garden nestled between four tall Irish yews, is an original Copper Copper. Probably found locally (maybe even in the Tower) this now planter is a remnant of some long-outdated Victorian water heating system, reused by Vita as an axis feature.

Invited by the National Trust, who now look after Sissinghurst Castle Garden for the nation, Architectural Heritage is proud to have faithfully copied the original planter down to the last rivet. Fashioned from the same grade of thick sheet brass, we have fabricated the distinctive bulbous shape and verdigris patinated *The Sissinghurst Castle Garden Copper Planter* to last another lifetime.

Poignantly, Vita wrote in 1959 'his scoop... it is still there – a little hollow in one of the stones near the central copper basin', Harold used it to measure how much rain had fallen in the night. Three years later Vita passed, however, the garden that 'tethered her floating heart' remains to this day for us all to enjoy.



© National Trust Image/David Seilman





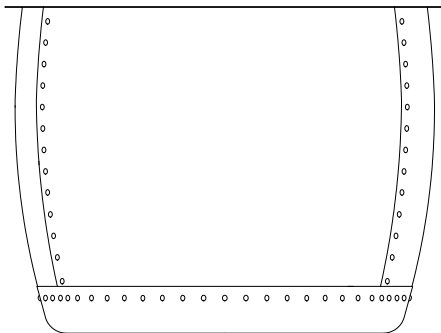
National
Trust

**The Sissinghurst
Castle Garden
Copper Planters**

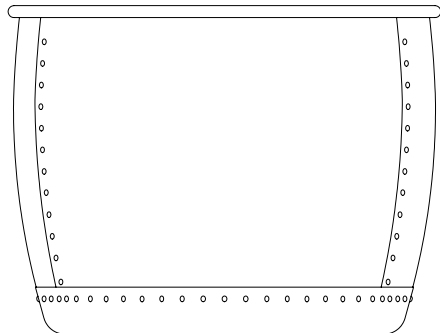
The Sissinghurst Castle Garden Copper Planter is now available with either a flat top or rolled edge. Hand crafted from heavy gauge brass with the distinctive bulbous shape, this planter is riveted together and then verdigris patinated to replicate the original.



© National Trust Images/Andrew Butler



Height 70 cm [2' 3½"]
Diameter 94 cm [3' 1"]

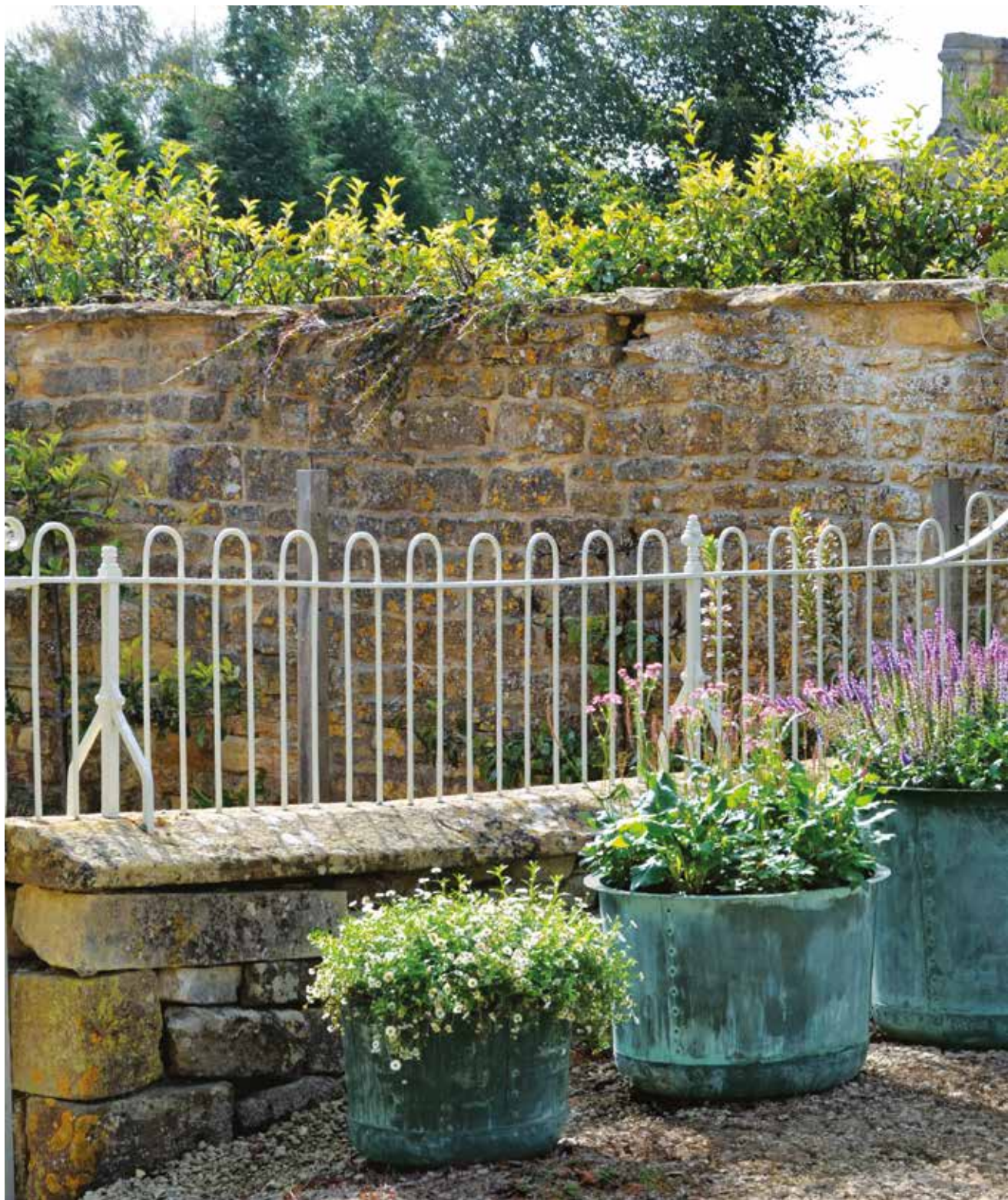


Height 70 cm [2' 3½"]
Diameter 92 cm [3' ¼"]



© National Trust Images/Andrew Butler

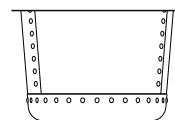






The Circular Copper Planters

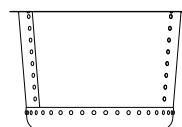
Hand crafted from heavy gauge brass, riveted together and then verdigris patinated to imitate the Victorian antique originals.



Small

Height 35 cm [1' 1 $\frac{3}{4}$ "

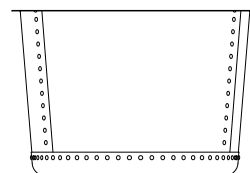
Diameter 54 cm [1' 9 $\frac{1}{4}$ "



Medium

Height 45 cm [1' 5 $\frac{3}{4}$ "

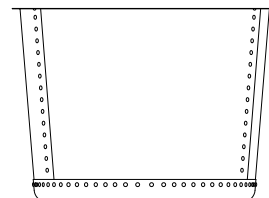
Diameter 68.5 cm [2' 3"



Large

Height 60 cm [1' 11 $\frac{1}{2}$ "

Diameter 89.4 cm [2' 11 $\frac{1}{4}$ "



Very Large

Height 73.5 cm [2' 5"

Diameter 100.8 cm [3' 3 $\frac{3}{4}$ "



**The Circular
Copper Planter
Small**

Hand crafted from heavy gauge brass, riveted together and then verdigris patinated to imitate the Victorian antique originals.

Height 35 cm [1' 1³/₄"]

Diameter 54 cm [1' 9¹/₄"]



**The Circular
Copper Planter
Medium**

Hand crafted from heavy gauge brass, riveted together and then verdigris patinated to imitate the Victorian antique originals.

Height 45 cm [1' 5¾"]

Diameter 68.5 cm [2' 3"]



**The Circular
Copper Planter
Large**

Hand crafted from heavy gauge brass, riveted together and then verdigris patinated to imitate the Victorian antique originals.

Height 60cm [1' 11½"]

Diameter 89.4cm [2' 11¼"]



**The Circular
Copper Planter
Very Large**

Hand crafted from heavy gauge brass, riveted together and then verdigris patinated to imitate the Victorian antique originals.

Height 73.5 cm [2' 5"]

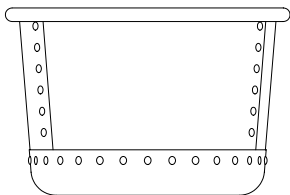
Diameter 100.8 cm [3' 3¾"]



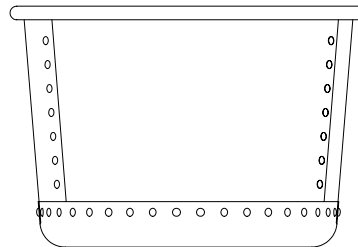


**The Circular
Copper Planters
Rolled Edge**

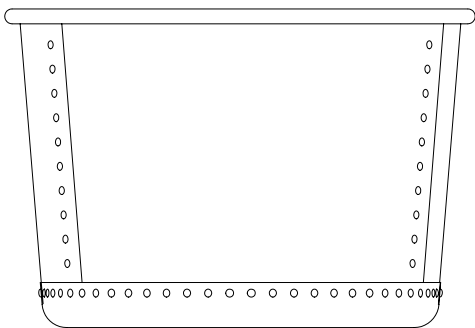
Hand crafted from heavy gauge brass with a rolled-edge top, riveted together and verdigris patinated.



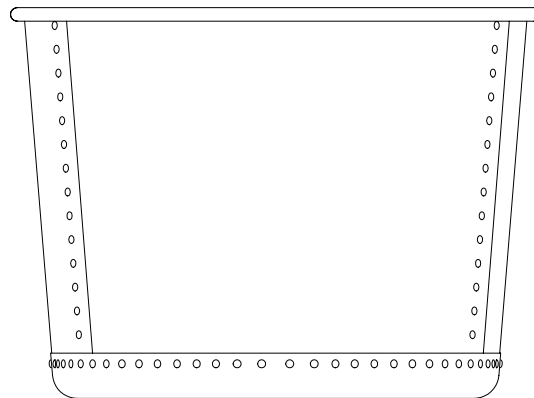
Small
Height 35 cm [1' 1 $\frac{3}{4}$ "]
Width 53.2 cm [1' 9"]



Medium
Height 45 cm [1' 5 $\frac{3}{4}$ "]
Width 66.7 cm [2' 2 $\frac{1}{4}$ "]



Large
Height 60 cm [1' 11 $\frac{1}{2}$ "]
Width 88.6 cm [2' 11"]



Very Large
Height 73.5 cm [2' 5"]
Width 99.7 cm [3' 3 $\frac{1}{4}$ "]



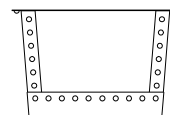
Featured: The Circular Copper Planter - Large - Rolled Edge





The Square Copper Planters

Hand crafted from heavy gauge brass, riveted together and then verdigris patinated to echo the Victorian antique originals.

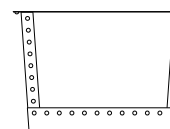


Small

Height 35 cm [1' 1 $\frac{3}{4}$ "

Width 54 cm [1' 9 $\frac{1}{4}$ "

Depth 54 cm [1' 9 $\frac{1}{4}$ "

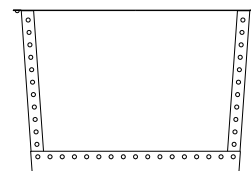


Medium

Height 45 cm [1' 5 $\frac{3}{4}$ "

Width 68.5 cm [2' 3"

Depth 68.5 cm [2' 3"

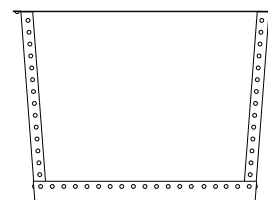


Large

Height 60 cm [1' 11 $\frac{1}{2}$ "

Width 89.4 cm [2' 11 $\frac{1}{4}$ "

Depth 89.4 cm [2' 11 $\frac{1}{4}$ "



Very Large

Height 73.5 cm [2' 5"

Width 100.8 cm [3' 3 $\frac{1}{2}$ "

Depth 100.8 cm [3' 3 $\frac{1}{2}$ "



**The Square
Copper Planter
Small**

Hand crafted from heavy gauge brass, riveted together and then verdigris patinated to echo the Victorian antique originals.

Height 35cm [1' 1 $\frac{3}{4}$ "

Width 54cm [1' 9 $\frac{1}{4}$ "

Depth 54cm [1' 9 $\frac{1}{4}$ "



Photograph by Eleanor Walpole/Garden Design by Butler-Workefield



**The Square
Copper Planter
Medium**

Hand crafted from heavy gauge brass, riveted together and then verdigris patinated to echo the Victorian antique originals.

Height 45cm [1' 5³/₄"

Width 68.5cm [2' 3"

Depth 68.5cm [2' 3"



Photograph by Eleanor Walpole/Garden Design by Bunter Wakefield



**The Square
Copper Planter
Large**

Hand crafted from heavy gauge brass, riveted together and then verdigris patinated to echo the Victorian antique originals.

Height 60cm [1' 11½"]

Width 89.4cm [2' 11¼"]

Depth 89.4cm [2' 11¼"]



Photograph by Eleanor Walspole/Garden Design by Butler Worsfield



**The Square
Copper Planter
Very Large**

Hand crafted from heavy gauge brass, riveted together and then verdigris patinated to echo the Victorian antique originals.

Height 73.5cm [2' 5"]

Width 100.8cm [3' 3¾"]

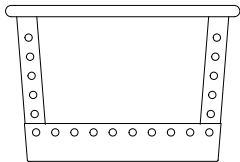
Depth 100.8cm [3' 3¾"]



Photograph by Eleanor Walpole/Garden Design by Butler-Workefield

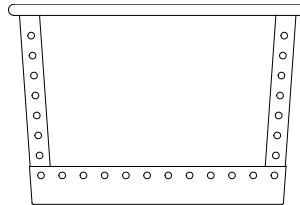
**The Square
Copper Planters
Rolled Edge**

Hand crafted from heavy gauge brass with a rolled-edge top, riveted together and verdigris patinated.



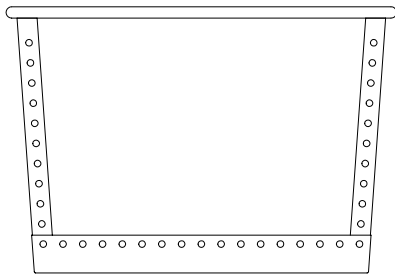
Small

Height 35 cm [1' 1 $\frac{3}{4}$ "]
Width 52.6 cm [1' 8 $\frac{3}{4}$ "]
Depth 52.6 cm [1' 8 $\frac{3}{4}$ "]



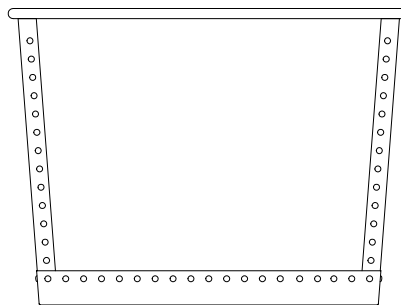
Medium

Height 45 cm [1' 5 $\frac{3}{4}$ "]
Width 67.1 cm [2' 2 $\frac{1}{2}$ "]
Depth 67.1 cm [2' 2 $\frac{1}{2}$ "]



Large

Height 60 cm [1' 11 $\frac{1}{2}$ "]
Width 88.1 cm [2' 10 $\frac{3}{4}$ "]
Depth 88.1 cm [2' 10 $\frac{3}{4}$ "]



Very Large

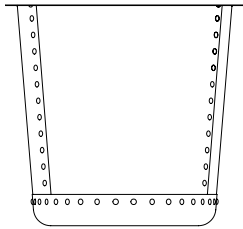
Height 73.5 cm [2' 5"
Width 99.4 cm [3' 3 $\frac{1}{4}$ "]
Depth 99.4 cm [3' 3 $\frac{1}{4}$ "]



Featured: The Square Copper Planter – Large – Rolled Edge

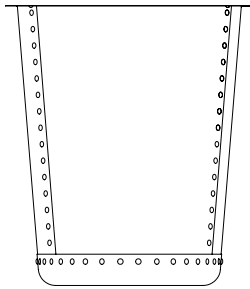
The Circular Terrace Copper Planters

Hand crafted from heavy gauge brass with flat top or rolled-edge option, riveted together and verdigris patinated.



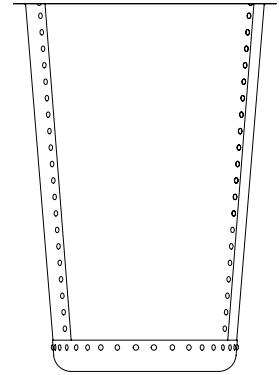
Small

Height 60 cm [1' 11½"]
Diameter 64.7 cm [2' 1½"]



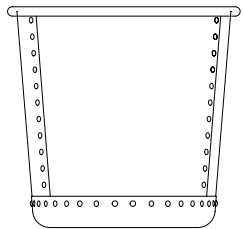
Medium

Height 76.2 cm [2' 6"]
Diameter 67.4 cm [2' 2¾"]



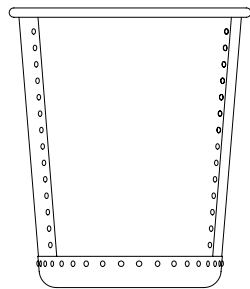
Large

Height 100 cm [3' 3½"]
Diameter 71.3 cm [2' 4¼"]



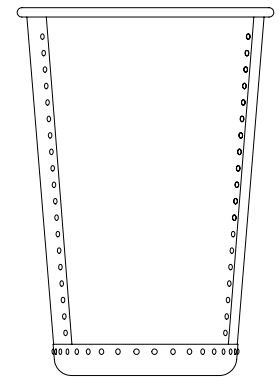
Small – Rolled Edge

Height 60 cm [1' 11½"]
Diameter 63.2 cm [2' 1"]



Medium – Rolled Edge

Height 76.2 cm [2' 6"]
Diameter 65.9 cm [2' 2"]



Large – Rolled Edge

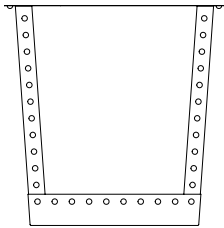
Height 100 cm [3' 2½"]
Diameter 69.8 cm [2' 3½"]



Featured: The Grailor Terrace Copper Planter – Medium

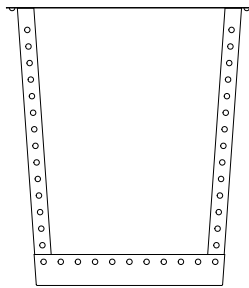
The Square Terrace Copper Planters

Hand crafted from heavy gauge brass with flat top or rolled-edge option, riveted together and verdigris patinated.



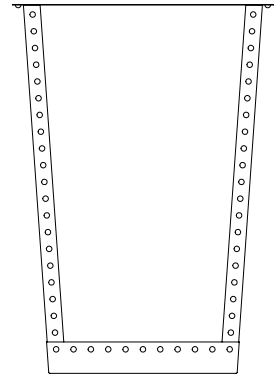
Small

Height 60 cm [1' 11½"]
Width 60 cm [1' 11½"]
Depth 60 cm [1' 11½"]



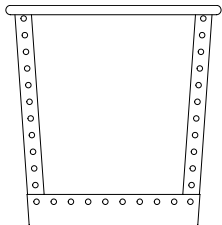
Medium

Height 76.2 cm [2' 6"]
Width 67.4 cm [2' 2½"]
Depth 67.4 cm [2' 2½"]



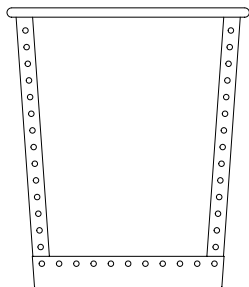
Large

Height 100 cm [3' 3½"]
Width 70.8 cm [2' 4"]
Depth 70.8 cm [2' 4"]



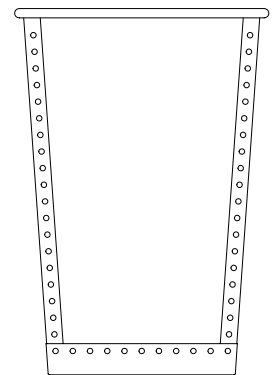
Small – Rolled Edge

Height 60 cm [1' 11½"]
Width 58.7 cm [1' 11¼"]
Depth 58.7 cm [1' 11¼"]



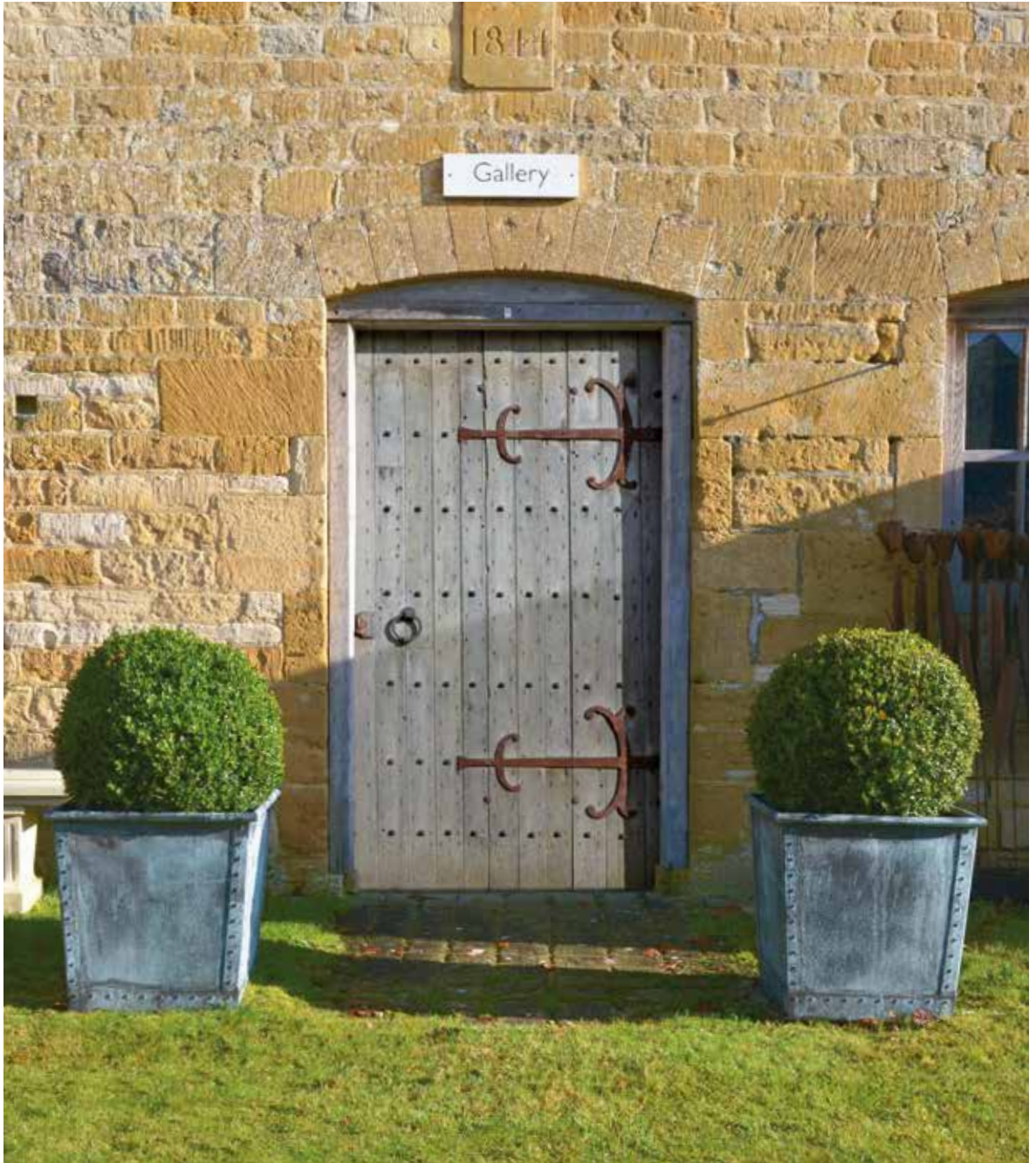
Medium – Rolled Edge

Height 76.2 cm [2' 6"]
Width 66.1 cm [2' 2"]
Depth 66.1 cm [2' 2"]



Large – Rolled Edge

Height 100 cm [3' 3½"]
Width 69.4 cm [2' 3½"]
Depth 69.4 cm [2' 3½"]



Featured: The Square Terrace Copper Planter - Small - Rolled Edge



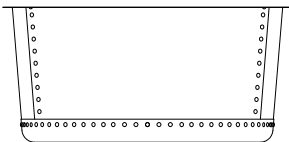
Photograph by Eleanor Walpole/Garden Design by Butler-Workefeld



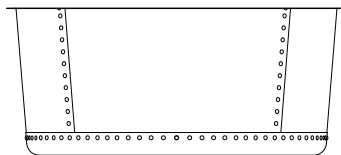
Photograph by Eleanor Worhole/Garden Design by Better Wakefield

The Courtyard Copper Planters

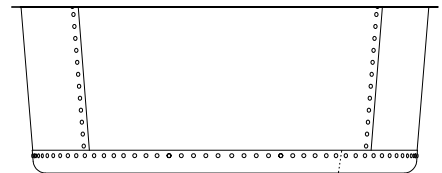
Hand crafted from heavy gauge brass, riveted together and then verdigris patinated to imitate the Victorian antique originals.



Small
Height 50 cm [1' 7¾"]
Diameter 107 cm [3' 6¼"]



Medium
Height 55 cm [1' 9¾"]
Diameter 127 cm [4' 2"]



Large
Height 62.2 cm [2' ½"]
Diameter 159.5 cm [5' 2¾"]

**The Courtyard
Copper Planter
Small**

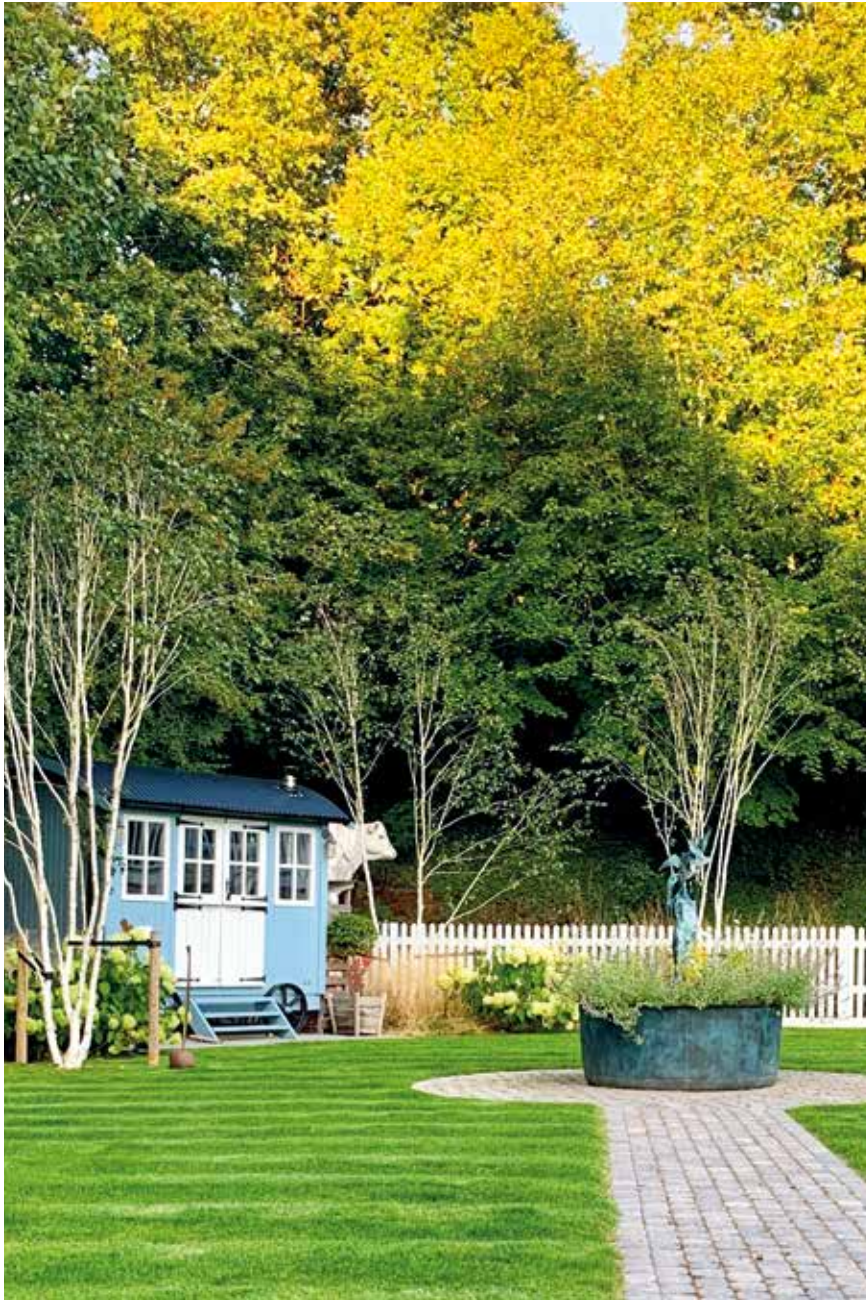
Hand crafted from heavy gauge brass, riveted together and then verdigris patinated to imitate the Victorian antique originals.

Height 50cm [1' 7¾"]

Diameter 107cm [3' 6¼"]



Image courtesy of Clare Bernet-Naghshineh



**The Courtyard
Copper Planter
Medium**

Hand crafted from heavy gauge brass, riveted together and then verdigris patinated to imitate the Victorian antique originals.

Height 55 cm [1' 9³/₄"]

Diameter 127 cm [4' 2"]

Image courtesy of Sarah Gore



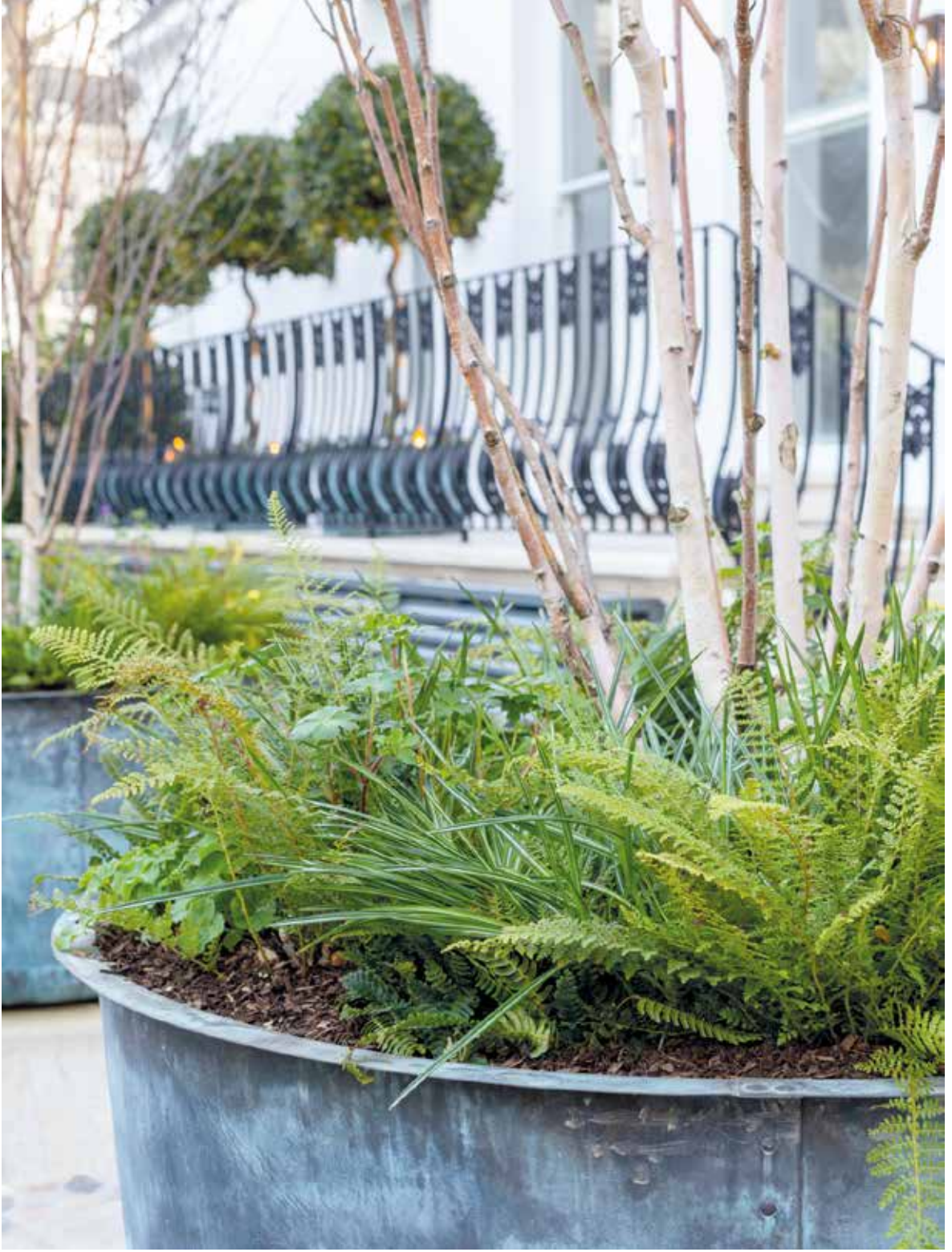
Photograph by Eleanor Walpole/Garden Design by Butler Wicksfield

**The Courtyard
Copper Planter
Large**

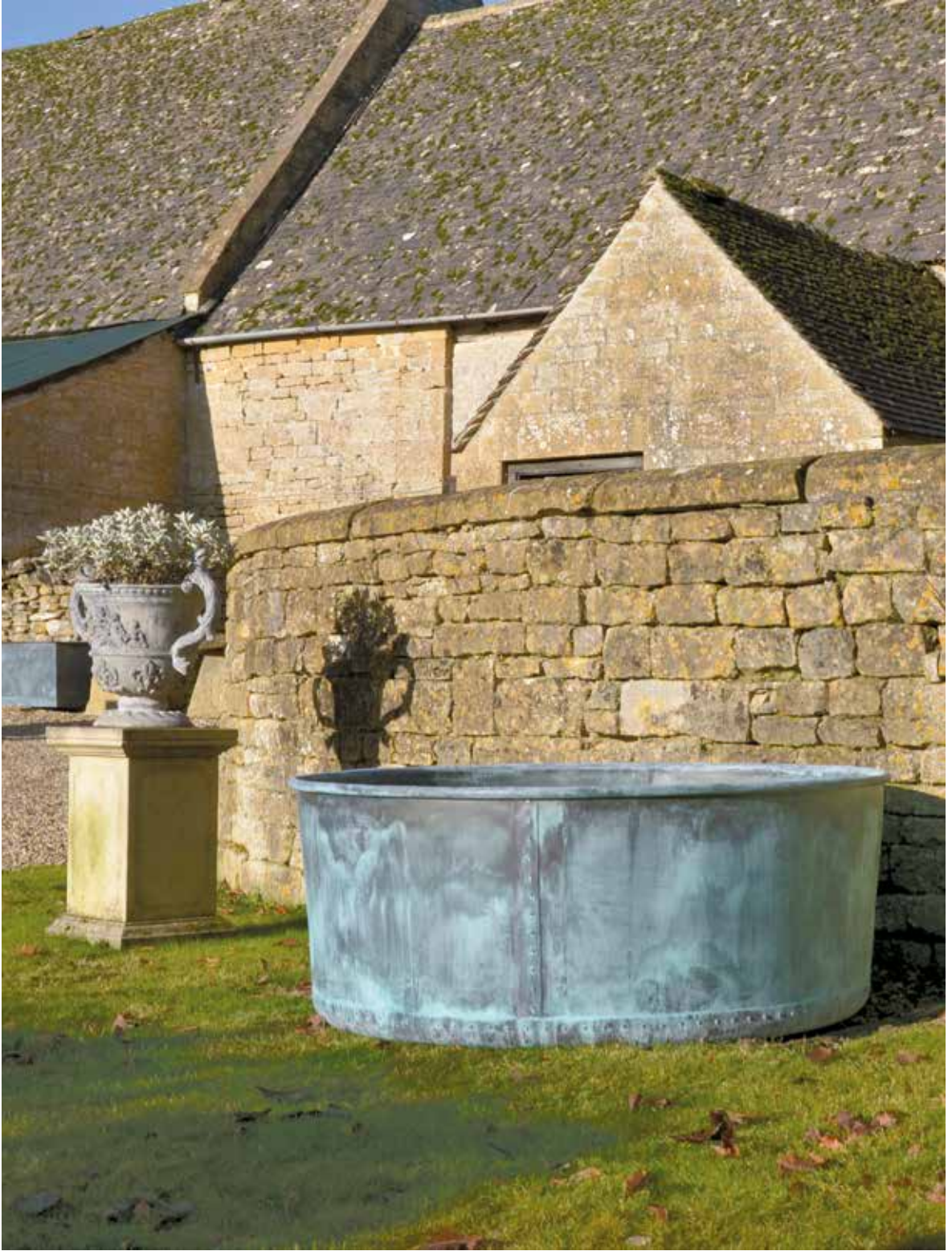
Hand crafted from heavy gauge brass, riveted together and then verdigris patinated to imitate the Victorian antique originals.

Height 62.2cm [2' 1/2"]

Diameter 159.5cm [5' 2 3/4"]



Photograph by Eleanor Wapole/Garden Design by Butler Wokosfeld



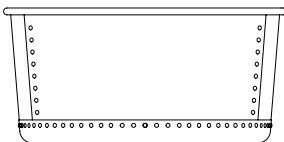
Featured: The Courtyard Copper Planter – Large – Rolled Edge



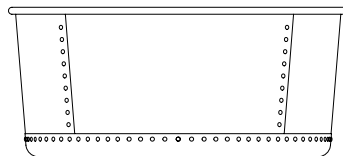
Featured: The Courtyard Copper Planter – Medium – Rolled Edge

**The Courtyard
Copper Planters
Rolled Edge**

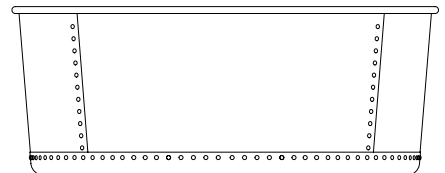
Hand crafted from heavy gauge brass with a rolled-edge top, riveted together and verdigris patinated.



Small
Height 50 cm [1' 7¾"]
Diameter 104.9 cm [3' 5½"]



Medium
Height 55 cm [1' 9¾"]
Diameter 124.9 cm [4' 1¼"]



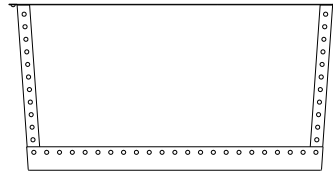
Large
Height 62.2 cm [2' 1½"]
Diameter 157.4 cm [5' 2"]





The Rectangular Copper Planters

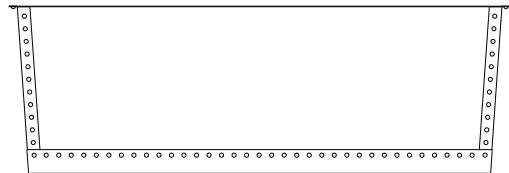
Hand crafted from heavy gauge brass, riveted together and then verdigris patinated to echo the Victorian antique originals.



Small

Height 60 cm [1' 11½"]

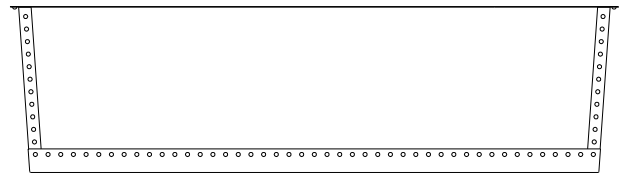
Length 120 cm [3' 11¼"]



Medium

Height 60 cm [1' 11½"]

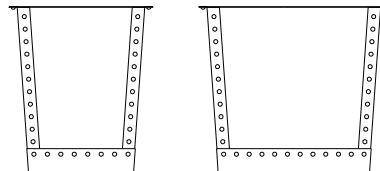
Length 180 cm [5' 10¾"]



Large

Height 60 cm [1' 11½"]

Length 220 cm [7' 2½"]



Available in two depths:

Narrow 52.2 cm [1' 8½"]

Wide 69 cm [2' 3¼"]



**The Rectangular
Copper Planter
Small**

Hand crafted from heavy gauge brass, riveted together and then verdigris patinated to echo the Victorian antique originals.

Height 60cm [1' 11½"]

Length 120cm [3' 11¼"]

Available in two depths:

Narrow 52.2cm [1' 8½"]

Wide 69cm [2' 3¼"]



**The Rectangular
Copper Planter
Medium**

Hand crafted from heavy gauge brass, riveted together and then verdigris patinated to echo the Victorian antique originals.

Height 60 cm [1' 11½"]

Length 180 cm [5' 10¾"]

Available in two depths:

Narrow 52.2 cm [1' 8½"]

Wide 69 cm [2' 3¼"]



**The Rectangular
Copper Planter
Large**

Hand crafted from heavy gauge brass, riveted together and then verdigris patinated to echo the Victorian antique originals.

Height 60cm [1' 11½"]
Length 220cm [7' 2½"]

Available in two depths:
Narrow 52.2cm [1' 8½"]
Wide 69cm [2' 3¼"]



Photograph by Eleanor Walpole/Garden Design by Butler-Walkefield

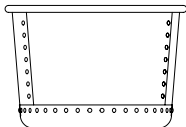




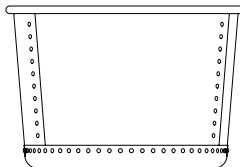
Featured: The Circular Copper Planter – Large – Rolled Edge – Watertight

**The Circular
Copper Planters**
Rolled Edge – Watertight

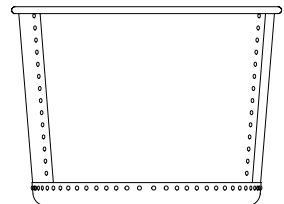
Hand crafted from heavy gauge brass with a rolled-edge top, riveted together and verdigris patinated. A pump pack is available.



Medium
Height 45 cm [1' 5¾"]
Width 66.7 cm [2' 2¼"]



Large
Height 60 cm [1' 11½"]
Width 88.6 cm [2' 11"]



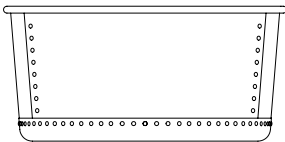
Very Large
Height 73.5 cm [2' 5"]
Width 99.7 cm [3' 3¼"]



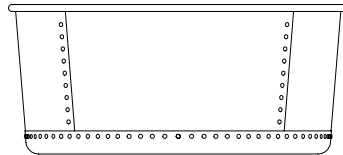
Featured: The Courtyard Copper Planter – Large – Rolled Edge

**The Courtyard
Copper Planters
Rolled Edge – Watertight**

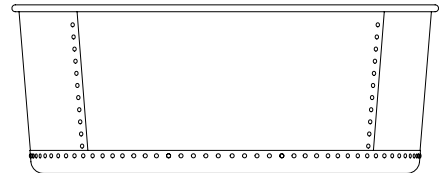
Hand crafted from heavy gauge brass with a rolled-edge top, riveted together and verdigris patinated. A pump pack is available.



Small
Height 50 cm [1' 7¾"]
Diameter 104.9 cm [3' 5½"]



Medium
Height 55 cm [1' 9¾"]
Diameter 124.9 cm [4' 1¼"]



Large
Height 62.2 cm [2' 1½"]
Diameter 157.4 cm [5' 2"]





**THE CARVED
NATURAL
STONE GARDEN
ORNAMENT
COLLECTION**

Garden Design by Howard Design Studio LLC / Photograph by Emily Followill

The Inverted Sundial Pedestal

A hand carved natural limestone sundial pedestal of tapering form, available with choice of armillary sphere.

With Zenith Armillary Sphere

Overall height
178 cm [5' 10"]
Square at base
34 cm [1' 1½"]
Sphere diameter
47 cm [1' 6½"]

With Greenwich Armillary Sphere

Overall height
198 cm [6' 6"]
Square at base
34 cm [1' 1½"]
Sphere diameter
70 cm [2' 3½"]





**The Solstice
Sundial Pedestal**

A hand carved natural limestone sundial pedestal of elegant baluster form. A choice of dial plate or armillary sphere is available.

**With Thomas Wright
Dial Plate**

Overall height
121 cm [3' 11½"]
Square at base
36 cm [1' 2"]

**With Zenith Armillary
Sphere**

Overall height
172.5 cm [5' 8"]
Square at base
36 cm [1' 2"]







The Curved Neo-Classical Seat

A hand carved natural limestone park seat of curved form having panelled back with central roundel, scrolled arm supports and volute feet.

Height 100cm [3' 3"]

Width 313 cm [9' 9"]

Depth 53 cm [1' 9"]





The Neo-Classical Seat

A hand carved natural limestone seat having panelled back with central roundel, dentil moulded arm supports and feet with inswept plinth bases.

Height 102 cm [3' 4"]

Width 166.5 cm [5' 5½"]

Depth 51.5 cm [1' 8¼"]



The Classic Curved Stone Bench

A hand carved natural limestone bench having fluted supports and shaped seat.

Height 48 cm [1'7"]

Width 140 cm [4'7"]

Depth 40 cm [1'3¾"]



The Classic Straight Stone Bench

A hand carved natural limestone bench having rectangular top on fluted shaped supports.

Height 48cm [1'7"]

Width 140 cm [4'7"]

Depth 40cm [1' 3¾"]



**The Classic Straight
Stone Bench
Large**

A hand carved natural limestone bench having rectangular top on fluted shaped supports.

Height 48 cm [1' 7"]

Width 200 cm [6' 6³/₄"]

Depth 40 cm [1' 3³/₄"]

The Obelisk

A hand carved natural limestone obelisk of tapering square form raised upon a panelled square base supported by four spheres.

Height 186 cm [6' 1¼"]

Width 36 cm [1' 2"]

Depth 36 cm [1' 2"]





The Obelisk

Large

A hand carved natural limestone obelisk of tapering square form raised upon a panelled square base supported by four spheres.

Height 249cm [8'2"]

Width 46cm [1'6"]

Depth 46cm [1'6"]

The Octagonal Vine Wellhead

A hand carved natural limestone wellhead with stone step, wrought iron overthrow, pulley and chain.

Height 254 cm [8' 4"]

Width 142 cm [4' 8"]





The Pergola

Bespoke commissions undertaken to supply hand carved natural limestone columns with English oak trellis.

**The Onslow Park
Wall Fountain with
Lead Spout**

A hand carved natural limestone wall fountain having a lead spout centred to the classical back plate. A bespoke fibreglass liner, tinted to match the stone, and pump pack, are available.

Height 156 cm [5' 1½"]

Width 140 cm [4' 7"]

Depth 86 cm [2' 10"]









**THE LEAD
GARDEN
ORNAMENT
& PLANTER
COLLECTION**



The Chiswick Lead Lion

A faithful copy, in lead, of the original 18th century stone versions, probably carved by John Cheere (1709–1787) for Lord Burlington's Chiswick House. Of large proportions these lions, facing forward, recline in a relaxed pose, their front paws outstretched and hind quarters curled around, with the tail tucked under. A small number of 18th century lead versions of these lions are extant, however, our models are the only lions available today that come close to replicating the grandeur and elegance of the large scale 18th century originals.

Height 75 cm [2' 5½"]
Width 166 cm [6' 5½"]
Depth 75 cm [2' 5½"]



The Chiswick Lead Lioness

A faithful copy, in lead, of the original 18th century stone versions, probably carved by John Cheere (1709–1787) for Lord Burlington's Chiswick House. Of large proportions these lions, facing forward, recline in a relaxed pose, their front paws outstretched and hind quarters curled around, with the tail tucked under. A small number of 18th century lead versions of these lions are extant, however, our models are the only lions available today that come close to replicating the grandeur and elegance of the large scale 18th century originals.

Height 75 cm [2' 5½"]
Width 166 cm [6' 5½"]
Depth 75 cm [2' 5½"]

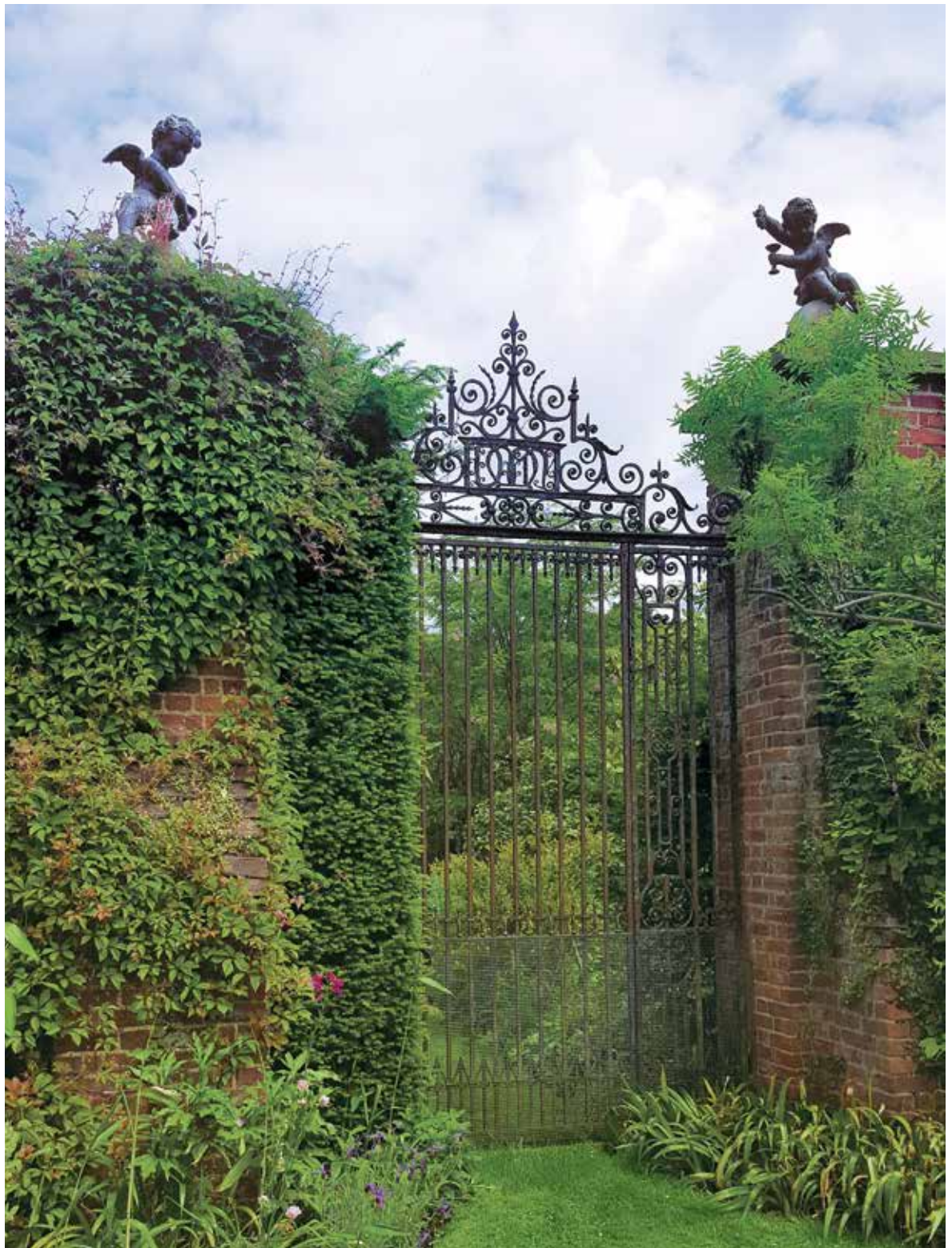


**The Winged Lead
Putti Finials**

A pair of winged lead Putti seated upon artificial stone spheres, after the 18th century originals.

Height 86 cm [2'10"]

Width 61 cm [2']



The Neo-Classical Lead Finial

A lead finial urn in the Neo-classic style having thumbnail groove decoration to the main body topped with swags and two masks, with a decorative lid and small finial, raised on a circular socle.

Height 60cm [1' 11½"]
Diameter 40cm [1' 3¾"]







The Townhouse Lead Planters

A lead planter of circular form with drainage holes to the base.

Small

Height 51 cm [1' 8"]
Diameter 61 cm [2']

Medium

Height 61 cm [2']
Diameter 76 cm [2' 6"]

Large

Height 75 cm [2' 6"]
Diameter 91.5 cm [3']

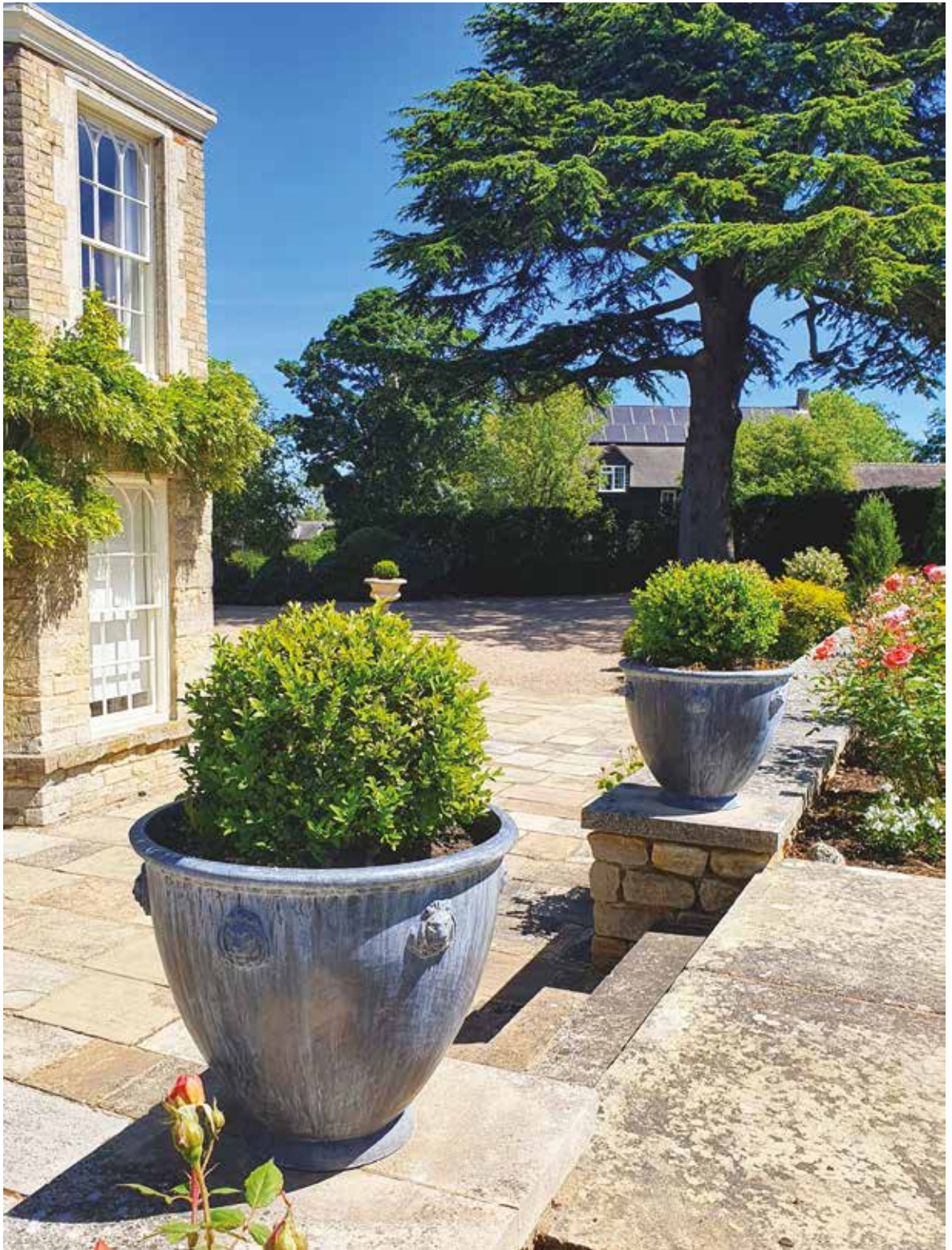


**The Townhouse
Lead Planter
Small – Lion Mask**

After the antique original,
a fine quality lead garden
planter of circular form
having applied lion mask
below the rim.

Height 51 cm [1'8"]
Diameter 61 cm [2']





**The Bromsgrove Guild
Lead Planter**

A faithful copy of an early 20th century model by the Bromsgrove Guild. An eight sided planter embellished with scenes and motifs relating to nature.

Height 48cm [1'7"]
Diameter 61cm [1'9"]





**The Lattice Vine
Lead Planter**

A lead planter of square form embellished with a lattice and vine decorative motif.

Height 48 cm [1'7"]

Width 51 cm [1'8"]

Depth 51 cm [1'8"]



**The Estate
Lead Planter
Small**

A lead planter ornamented
with recessed square
panels.

Height 50cm [1' 7¾"]

Width 54cm [1' 9¼"]

Depth 54cm [1' 9¼"]



**The Estate
Lead Planter
Medium**

A lead planter ornamented with recessed square panels.

Height 50 cm [1' 7³/₄"

Width 101.5 cm [3' 4"

Depth 54 cm [1' 9¹/₄"



**The Estate
Lead Planter
Large**

A lead planter ornamented with recessed square panels.

Height 66 cm [2' 2"]

Width 101.5 cm [3' 4"]

Depth 66 cm [2' 2"]



**The Estate
Lead Planter
Very Large**

A lead planter ornamented with recessed square panels.

Height 66 cm [2' 2"]

Width 101.5 cm [3' 4"]

Depth 101.5 cm [3' 4"]





**THE CURATED
GARDEN
COLLECTION**



The Quercus Robur High Back Garden Seat

An Arts & Crafts inspired garden seat carved from 6-year-old air-dried English Oak (*Quercus Robur*), of plank construction with keyed mortise and tenon joints.

Height 91.5cm [3']

Width 198cm [6' 6"]

Depth 74cm [2' 5"]



The Quercus Robur Garden Seat

An Arts & Crafts inspired garden seat carved from 6-year-old air-dried English Oak (Quercus Robur), of plank construction with keyed mortise and tenon joints.

Height 67 cm [2' 2½"]

Width 198 cm [6' 6"]

Depth 74 cm [2' 5"]



**The Farmhouse
Garden Dining Table
and Benches Set**

Joined using recycled teak, this large scale garden table and benches set will stay outside all year and gently weather in time to a silvery grey.

Table height 77 cm [2' 6¼"]

Table width 250 cm [8' 2½"]

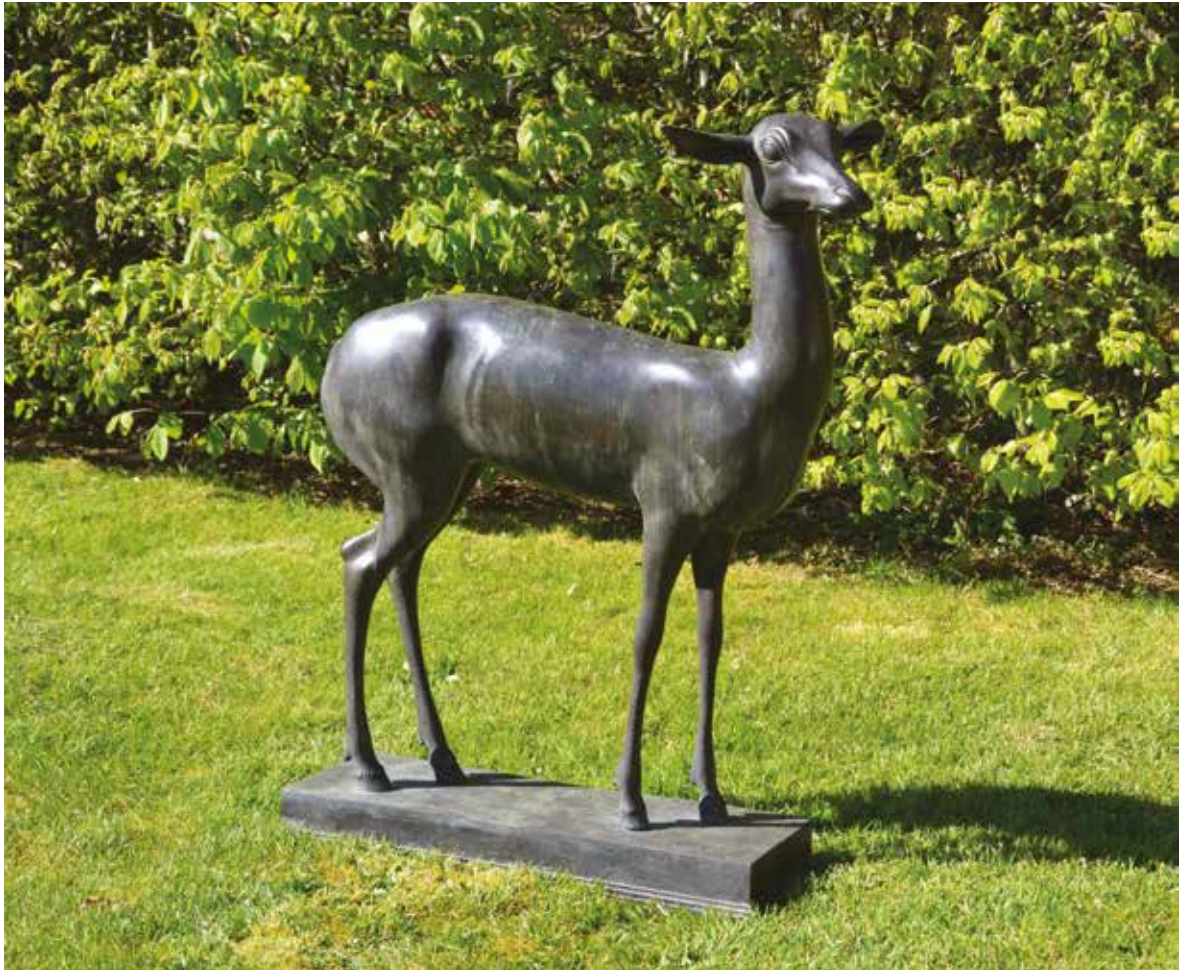
Table depth 100 cm [3' 3½"]

Bench height 46.5 cm [1' 6¼"]

Bench width 250 cm [8' 2½"]

Bench depth 42 cm [1' 4½"]





The Daini

A bronze deer cast via the lost wax process, being a copy of the original found in the Villa dei Papiri, Herculaneum.

The Daini as a handed pair is also available.

Height 87 cm [2' 10¹/₄"]

Width 74 cm [2' 5¹/₄"]

Depth 22 cm [8³/₄"]





The Zenith Armillary Sphere

A verdigris bronze armillary sphere, pierced with an arrow and calibrated with the hours. Mounted upon a bell shaped support.

Overall height 74 cm [2' 5"]
Sphere diameter 47 cm [1' 6½"]
Diameter at base 17 cm [6½"]



The Greenwich Armillary Sphere

A verdigris bronze armillary sphere, pierced with an arrow and calibrated with the hours. Mounted upon a bell shaped support.

Overall height 94 cm [3' 1"]
Sphere diameter 70 cm [2' 3½"]
Diameter at base 17 cm [6½"]



The Holborn Armillary Sphere

A verdigris bronze oversized armillary sphere, pierced with a decorative arrow and calibrated with the hours. Mounted upon a bell shaped support.

Overall height 125 cm [4' 1"]
Sphere diameter 94 cm [3' 1"]
Diameter at base 17 cm [6½"]





The Ham House Coado Stone Pineapple Finial

A fine model based on the 18th century original made by Mrs Eleanor Coado, an example of which can be seen at Ham House, Twickenham. Here we have these handsome finials handcrafted in terracotta, being in the same material as developed by Coado in the 18th century – its twice fired mixture, including silica, makes this material impervious to the weather, hence we still have extant such fine examples of Mrs Coado's stone adorning the best houses and gardens in the country.

Height 86 cm [2' 10"]

Diameter 52 cm [1' 8½"]

Square at base 30 cm [11¾"]





**The Tree of Life
Wall Panel – Circular**

The decorative panel, incorporating a tree with birds of paradise, is hand punched from recycled oil drums and finished with a varnish.

Diameter 86.5 cm [2' 10"]

*Please note that this item will
rust in time when outside*



The Tree of Life Wall Panel

The decorative panel, incorporating a tree with birds of paradise, is hand punched from recycled oil drums and finished with a varnish.

Diameter 86.5 cm [2' 10"]

*Please note that this item will
rust in time when outside*

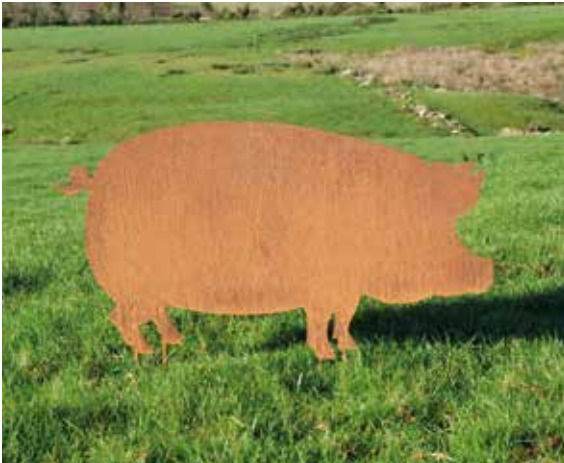


'Dolly' The Rusty Sheep

A rusty iron sheep, available singly or as a flock.

Height 51 cm [1' 8"]

Width 55 cm [1' 9½"]



'Colin' The Rusty Pig

A rusty iron pig, available singly or as a sounder.

Height 48 cm [1' 7"]

Width 94 cm [3' 1"]



'Rudolph' The Rusty Reindeer

A rusty iron reindeer, available singly or as a herd.

Height 75 cm [2' 5½"]

Width 71 cm [2' 4"]



The Rusty Blooms

An assemblage of rusty iron tulips with stems and leaves, creating a flexible sculptural installation.

Height 122 cm [4']





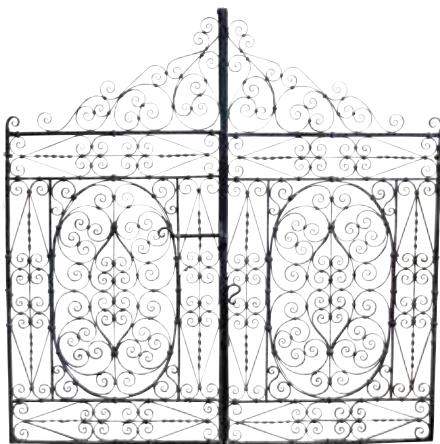
**PRICING &
INFORMATION**

ARCHITECTURAL HERITAGE

GARDEN ANTIQUES



Specialising in Antique Garden Ornament, Statuary and Fountains for over 40 years, we carry an extensive inventory to supply clients with the finest examples of garden antiques on the market today.





Chelsea Flower Show



Galleries and Garden at Taddington

ARCHITECTURAL HERITAGE

MODERN BRITISH ART



We have put the **ART** into **Architectural Heritage** with our offering of Modern British Art, primarily, but not exclusively, specialising in 20th century British sculpture. Fine examples of sculpture, paintings and works on paper, by established and interesting artists, are exhibited both here in our gallery at Taddington and at Fine Art Fairs in London.





Our Gallery



Art Fairs

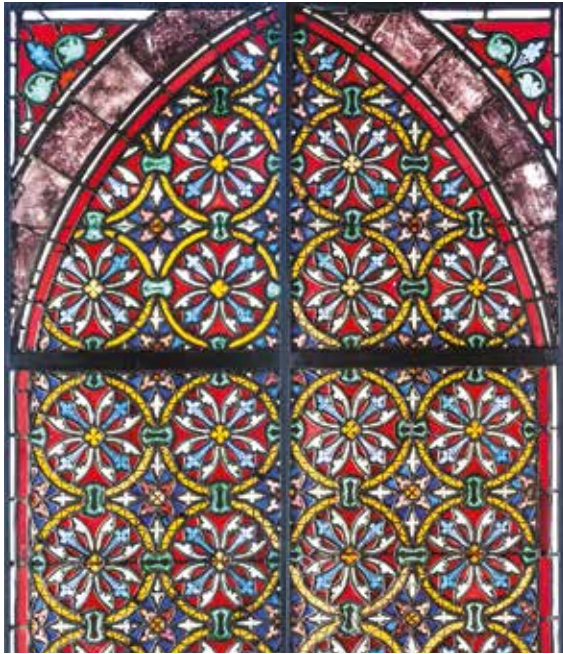
ARCHITECTURAL HERITAGE

ARCHITECTURAL INTERIORS

In its earliest incarnation Architectural Heritage dealt primarily in antique architectural elements. Over the years we have grown and diversified, however, we have still retained our expertise in: antique panelling, chimneypieces, staircases, stained glass and unusual architectural elements.

To complement the antique architectural interiors, we also undertake commissions to carve, in natural limestone, bespoke stone chimneypieces.





ARCHITECTURAL HERITAGE

CONSULTANCY

Valuations

Whether you are looking to sell an item, seeking advice for insurance or probate purposes, or need an expert witness, we can assist.

Alex Puddy is an elected member of The British Antique Dealers' Association (BADA), The Association of Art & Antiques Dealers (LAPADA) and Chairman of The Cotswolds Art & Antique Dealers' Association (CADA), and with over 25 years' experience is well qualified to give a professional appraisal.

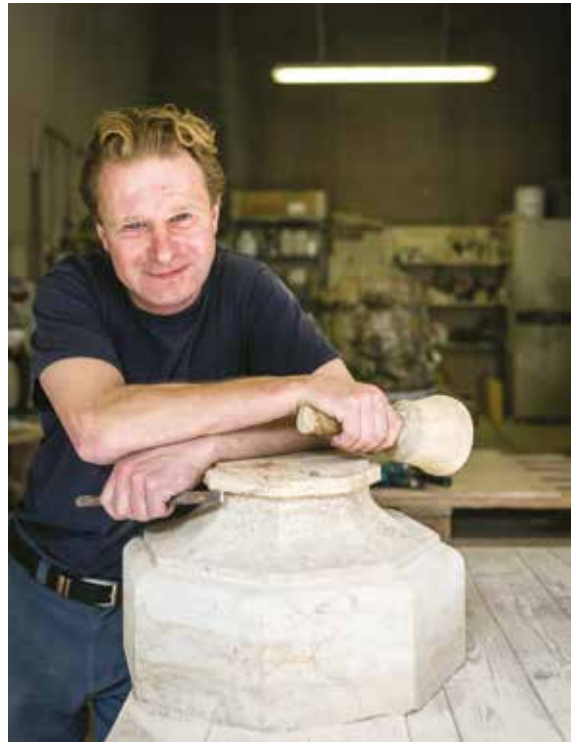
Please do contact us to discuss your requirements and we will in turn advise on our fee structure.





Restoration

As specialists in our field we have, over the years, developed an unequalled understanding of the care required to conserve antique garden statuary and ornament. Adam Puddy, a qualified master stonemason, is an expert in the restoration of natural stone and composition stone. In addition, we can also advise on the conservation of garden statuary and ornament in other materials such as: marble, lead, bronze and terracotta. Please do contact us for advice and a quotation.



PRICE LIST 2021

PAGE NO.	THE FORGED IRON GARDEN DINING & FURNITURE COLLECTON	PRICE (EXCL. VAT)
4	The Circular Garden Table for Two with Two Ladderback Garden Chairs	£ 840.00
5	The Circular Garden Table for Two with Two Low Ladderback Carver Chairs	£ 1480.00
6	The Circular Garden Table for Two with Two Sprung Garden Chairs	£ 800.00
7	The Circular Garden Table for Two with Two Sprung Carver Chairs	£ 840.00
8	The Small Circular Garden Dining Table for Four with Four Ladderback Garden Chairs	£ 1,800.00
9	The Small Circular Garden Dining Table for Four with Four Ladderback Carver Chairs	£ 3,080.00
10	The Small Circular Garden Dining Table for Six with Six Ladderback Garden Chairs	£ 2,360.00
12	The Large Circular Garden Dining Table for Four with Four Ladderback Carver Chairs	£ 3,320.00
13	The Large Circular Garden Dining Table for Six with Six Ladderback Garden Chairs	£ 2,600.00
14	The Small Rectangular Garden Dining Table for Four with Four Ladderback Chairs	£ 2,400.00
16	The Small Rectangular Garden Dining Table for Six with Six Ladderback Chairs	£ 2,960.00
17	The Small Rectangular Garden Dining Table for Six with Four Ladderback Chairs and Two Ladderback Carver Chairs	£ 3,600.00
18	The Large Rectangular Garden Dining Table for Eight with Eight Ladderback Chairs	£ 3,600.00
19	The Large Rectangular Garden Dining Table for Eight with Six Ladderback Chairs and Two Ladderback Carver Chairs	£ 4,240.00
20	The Large Rectangular Garden Dining Table for Ten with Ten Ladderback Chairs	£ 4,160.00
21	The Large Rectangular Garden Dining Table for Ten with Eight Ladderback Chairs and Two Ladderback Carver Chairs	£ 4,800.00

PAGE NO.		PRICE (EXCL. VAT)
22	The Rectangular Garden Coffee Table with Two Low Ladderback Carvers and a Small Straight Ladderback Garden Seat	£ 2,800.00
23	The Rectangular Garden Coffee Table with Two Low Ladderback Carvers and a Medium Straight Ladderback Garden Seat	£ 3,000.00
24	The Small Straight Ladderback Garden Seat	£ 1,000.00
25	The Medium Straight Ladderback Garden Seat	£ 1,200.00
26	The Large Straight Ladderback Garden Seat	£ 1,400.00
27	The Semi-Circular Ladderback Garden Seat	£ 1,600.00
28	The Semi-Circular Ladderback Garden Tree Seat	£ 1,600.00
30	The Sprung Garden Chair	£ 280.00
30	The Sprung Carver Garden Chair	£ 600.00
31	The Ladderback Garden Chair	£ 600.00
31	The Ladderback Carver Chair – High	£ 260.00
31	The Ladderback Carver Chair – Low	£ 280.00
32	The Circular Garden Table for Two	£ 280.00
32	The Rectangular Garden Coffee Table	£ 600.00
34	The Small Circular Garden Dining Table	£ 680.00
34	The Large Circular Garden Dining Table	£ 920.00
35	The Small Rectangular Garden Dining Table	£ 1,280.00
35	The Large Rectangular Garden Dining Table	£ 1,360.00

PAGE NO.	THE AGE-PATINATED ARTIFICIAL STONE GARDEN FOUNTAIN & ORNAMENT COLLECTION	PRICE (EXCL. VAT)
38	The Single Tier Fountain – <i>New Stone Colour Patination</i>	£ 3,000.00
	The Single Tier Fountain Pump Pack	£ 300.00
39	The Single Tier Fountain	£ 3,000.00
	The Single Tier Fountain Pump Pack	£ 300.00
40	The Large Low Single Tier Fountain	£ 3,600.00
	The Large Low Single Tier Fountain Pump Pack	£ 400.00
41	The Large Single Tier Fountain	£ 4,000.00
	The Large Single Tier Fountain Pump Pack	£ 400.00
42	The Two Tier Fountain	£ 6,800.00
	The Two Tier Fountain Pump Pack	£ 400.00
43	The Decorative Circular Pool Surround	£ 4,400.00
44	The Circular Pool Surround – <i>New Stone Colour Patination</i>	£ 3,800.00
45	The Circular Pool Surround	£ 3,800.00
46	The Square Pool Surround	£ 3,800.00
47	The Great Westwood Pool Surround	£ 6,600.00
48	The Wall Fountain with Lion Mask	£ 2,800.00
	The Wall Fountain with Lion Mask Pump Pack	£ 300.00
50	The Sphere – Small	£ 350.00
50	The Sphere – Medium	£ 500.00
50	The Sphere – Large	£ 700.00
52	The Heritage Finial	£ 1,400.00
53	The Heritage Plinth	£ 1,400.00
54	The William IV Sundial Pedestal with Greenwich Armillary Sphere	£ 3,000.00

THE VERDIGRIS COPPER GARDEN PLANTER COLLECTION

The Sissinghurst Castle Garden Copper Planters

61	The Sissinghurst Castle Garden Copper Planter	£ 2,600.00
61	The Sissinghurst Castle Garden Copper Planter - Rolled Edge	£ 3,000.00

PAGE NO.	The Circular Copper Planters	PRICE (EXCL. VAT)
64	The Circular Copper Planter – Small	£ 900.00
70	The Circular Copper Planter – Small - Rolled Edge	£ 1,000.00
65	The Circular Copper Planter – Medium	£ 1,400.00
70	The Circular Copper Planter – Medium - Rolled Edge	£ 1,500.00
104	The Circular Copper Planter – Medium - Rolled Edge - Watertight	£ 1,800.00
66	The Circular Copper Planter – Large	£ 1,800.00
70	The Circular Copper Planter – Large - Rolled Edge	£ 2,000.00
104	The Circular Copper Planter – Large - Rolled Edge - Watertight	£ 2,400.00
68	The Circular Copper Planter – Very Large	£ 2,400.00
70	The Circular Copper Planter – Very Large - Rolled Edge	£ 2,600.00
104	The Circular Copper Planter – Very Large - Rolled Edge - Watertight	£ 3,000.00

The Square Copper Planters

74	The Square Copper Planter – Small	£ 1,100.00
82	The Square Copper Planter – Small - Rolled Edge	£ 1,200.00
76	The Square Copper Planter – Medium	£ 1,400.00
82	The Square Copper Planter – Medium - Rolled Edge	£ 1,600.00
78	The Square Copper Planter – Large	£ 2,000.00
82	The Square Copper Planter – Large - Rolled Edge	£ 2,400.00
79	The Square Copper Planter – Very Large	£ 2,800.00
82	The Square Copper Planter – Very Large - Rolled Edge	£ 3,200.00

The Circular Terrace Copper Planters

84	The Circular Terrace Copper Planter – Small	£ 1,600.00
84	The Circular Terrace Copper Planter – Small - Rolled Edge	£ 1,800.00
84	The Circular Terrace Copper Planter – Medium	£ 1,800.00
84	The Circular Terrace Copper Planter – Medium - Rolled Edge	£ 2,000.00
84	The Circular Terrace Copper Planter – Large	£ 2,200.00
84	The Circular Terrace Copper Planter – Large - Rolled Edge	£ 2,400.00

The Square Terrace Copper Planters

86	The Square Terrace Copper Planter – Small	£ 1,700.00
86	The Square Terrace Copper Planter – Small - Rolled Edge	£ 1,900.00
86	The Square Terrace Copper Planter – Medium	£ 1,900.00
86	The Square Terrace Copper Planter – Medium - Rolled Edge	£ 2,000.00
86	The Square Terrace Copper Planter – Large	£ 2,200.00
86	The Square Terrace Copper Planter – Large - Rolled Edge	£ 2,400.00

PAGE NO.	The Courtyard Copper Planters	PRICE (EXCL. VAT)
90	The Courtyard Copper Planter – Small	£ 2,400.00
95	The Courtyard Copper Planter – Small - Rolled Edge	£ 2,600.00
105	The Courtyard Copper Planter – Small - Rolled Edge - Watertight	£ 2,800.00
91	The Courtyard Copper Planter – Medium	£ 3,200.00
95	The Courtyard Copper Planter – Medium - Rolled Edge	£ 3,500.00
105	The Courtyard Copper Planter – Medium - Rolled Edge - Watertight	£ 3,800.00
92	The Courtyard Copper Planter – Large	£ 4,200.00
95	The Courtyard Copper Planter – Large - Rolled Edge	£ 4,600.00
105	The Courtyard Copper Planter – Large - Rolled Edge - Watertight	£ 5,000.00

The Rectangular Copper Planters

98	The Rectangular Copper Planter – Small – Narrow	£ 2,200.00
	The Rectangular Copper Planter – Small – Narrow - Rolled Edge	£ 2,400.00
	The Rectangular Copper Planter – Small – Wide	£ 2,400.00
	The Rectangular Copper Planter – Small – Wide - Rolled Edge	£ 2,600.00
99	The Rectangular Copper Planter – Medium – Narrow	£ 3,000.00
	The Rectangular Copper Planter – Medium – Narrow - Rolled Edge	£ 3,200.00
	The Rectangular Copper Planter – Medium – Wide	£ 3,200.00
	The Rectangular Copper Planter – Medium – Wide - Rolled Edge	£ 3,400.00
100	The Rectangular Copper Planter – Large – Narrow	£ 3,800.00
	The Rectangular Copper Planter – Large – Narrow - Rolled Edge	£ 4,000.00
	The Rectangular Copper Planter – Large – Wide	£ 4,500.00
	The Rectangular Copper Planter – Large – Wide - Rolled Edge	£ 4,800.00

THE CARVED NATURAL STONE GARDEN ORNAMENT COLLECTION

108	The Inverted Sundial Pedestal with Zenith Armillary Sphere	£ 2,200.00
108	The Inverted Sundial Pedestal with Greenwich Armillary Sphere	£ 2,400.00
110	The Solstice Sundial Pedestal with Thomas Wright Sundial Plate	£ 2,200.00
111	The Solstice Sundial Pedestal with Zenith Armillary Sphere	£ 2,400.00
112	The Curved Neo-Classical Seat	£ 6,400.00
114	The Neo-Classical Seat	£ 4,600.00
115	The Classic Curved Stone Bench	£ 1,400.00
116	The Classic Straight Stone Bench	£ 1,400.00
117	The Classic Straight Stone Bench – Large	£ 1,800.00
118	The Obelisk	£ 2,400.00
119	The Obelisk – Large	£ 3,200.00

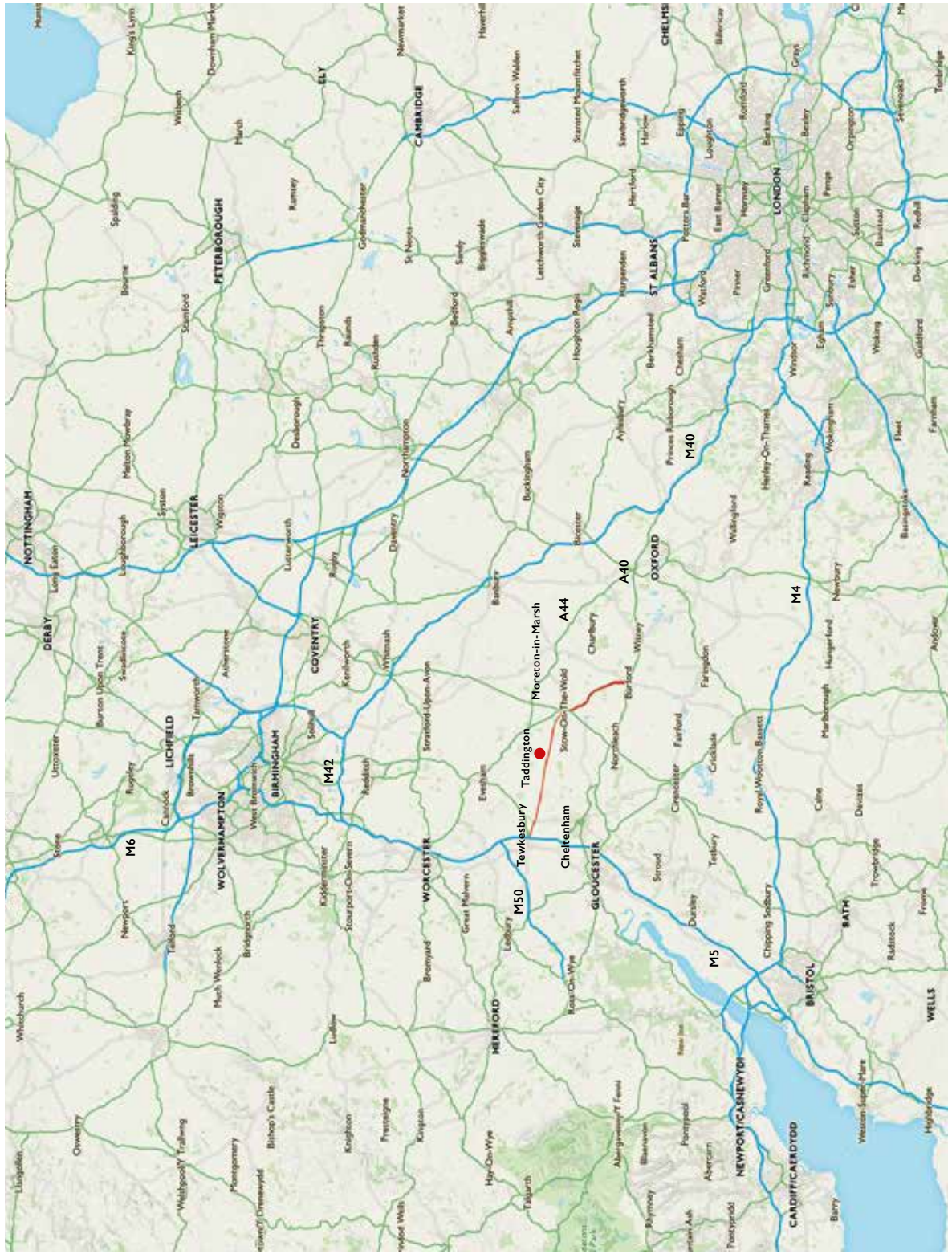
PAGE NO.	<i>The Carved Natural Stone Garden Ornament Collection Cont.</i>	PRICE (EXCL. VAT)
120	The Octagonal Vine Wellhead	£ 5,800.00
121	The Pergola	£ 12,000.00
122	The Onslow Park Wall Fountain with Lead Spout	£ 6,800.00
	The Onslow Park Wall Fountain Fibreglass Liner	£ 600.00
	The Onslow Park Wall Fountain Pump Pack	£ 300.00

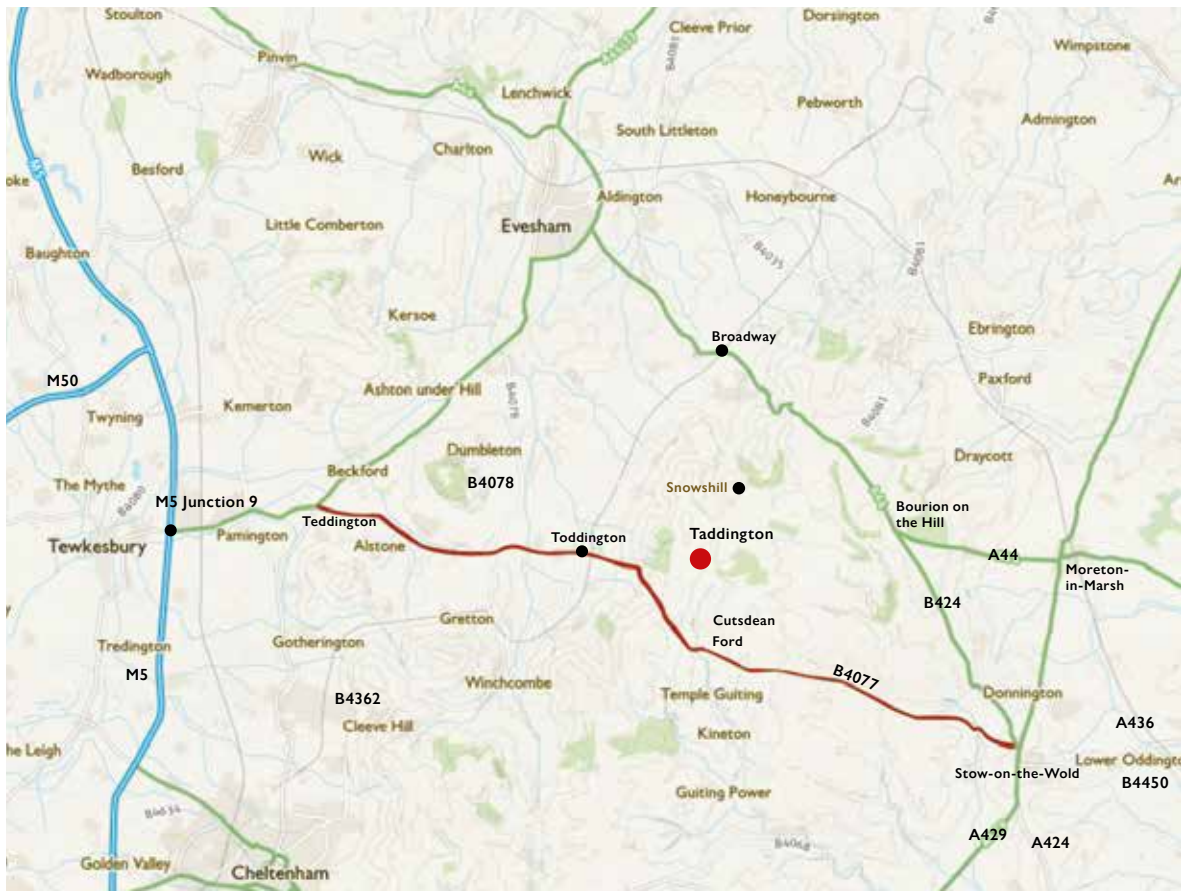
THE LEAD GARDEN ORNAMENT & PLANTER COLLECTION

126	The Chiswick Lead Lion	£ 24,000.00
127	The Chiswick Lead Lioness	£ 24,000.00
128	The Winged Lead Putti Finials	£ 4,000.00
130	The Neo-Classical Lead Finial	£ 800.00
132	The Townhouse Lead Planter – Small	£ 2,000.00
132	The Townhouse Lead Planter – Medium	£ 2,600.00
132	The Townhouse Lead Planter – Large	£ 3,400.00
134	The Townhouse Lead Planter – Small - Lion Mask	£ 2,000.00
136	The Bromsgrove Guild Lead Planter	£ 2,000.00
137	The Lattice Vine Lead Planter	£ 2,000.00
138	The Estate Lead Planter – Small	£ 1,800.00
139	The Estate Lead Planter – Medium	£ 2,600.00
140	The Estate Lead Planter – Large	£ 3,600.00
141	The Estate Lead Planter – Very Large	£ 4,600.00

THE CURATED GARDEN COLLECTION

144	The Quercus Robur High Back Garden Seat	£ 4,800.00
145	The Quercus Robur Garden Seat	£ 3,600.00
146	The Farmhouse Garden Dining Table and Benches Set	£ 3,800.00
148	The Daini	£ 7,800.00
150	The Zenith Armillary Sphere	£ 1,200.00
150	The Greenwich Armillary Sphere	£ 1,400.00
150	The Holborn Armillary Sphere	£ 1,600.00
152	The Ham House Coade Stone Pineapple Finial	£ 6,000.00
154	The Tree of Life Wall Panel – Circular	£ 300.00
155	The Tree of Life Wall Panel	£ 300.00
156	The Rusty Sheep 'Dolly'	£ 140.00
156	The Rusty Pig 'Colin'	£ 240.00
156	The Rusty Reindeer 'Rudolph'	£ 180.00
157	The Rusty Bloom	£ 40.00





Location

Taddington Manor
Taddington
Nr. Cutsdean
Gloucestershire
England GL54 5RY

Architectural Heritage is situated in the grounds of Taddington Manor, in the tiny hamlet of Taddington. The galleries and garden are open year round.

We are one hour away from Oxford, Bristol and Birmingham, and two hours from London.



The British Antique Dealers' Association



LAPADA

The Association of Art & Antiques Dealers



The Cotswold Art & Antiques Dealers' Association



The Architectural Dealers' Association



Anti Copying in Design



Forest Carbon Club

ARCHITECTURAL HERITAGE

GARDEN | MODERN BRITISH | INTERIOR

Taddington Manor
Taddington, Nr. Cutsdean
Gloucestershire
England GL54 5RY
office@architectural-heritage.co.uk
www.architectural-heritage.co.uk
Tel: +44 [0] 1386 584 414

9.00am – 5.00pm Monday – Friday
Saturdays by Appointment
Closed Sundays and Bank Holidays



Designed & typeset by etal design consultants.
Printed in Great Britain by Stephens & George Ltd, on
Edixion Offset. Edixion is produced from sustainable
sources and is fully recyclable.

Copyright © Architectural Heritage 2021. All rights
reserved. No part of this publication may be reproduced,
transmitted, or stored in a retrieval system, in any form,
or by any means, without permission in writing from
Architectural Heritage.

**FOREST
CARBON**



Recycle

**FOREST
CARBON**

If undelivered please return to: Architectural Heritage, Taddington Manor, Taddington, Cheltenham, Gloucestershire, GL54 5RY, UK
If your details have changed or you no longer wish to receive catalogues please email: office@architectural-heritage.co.uk

